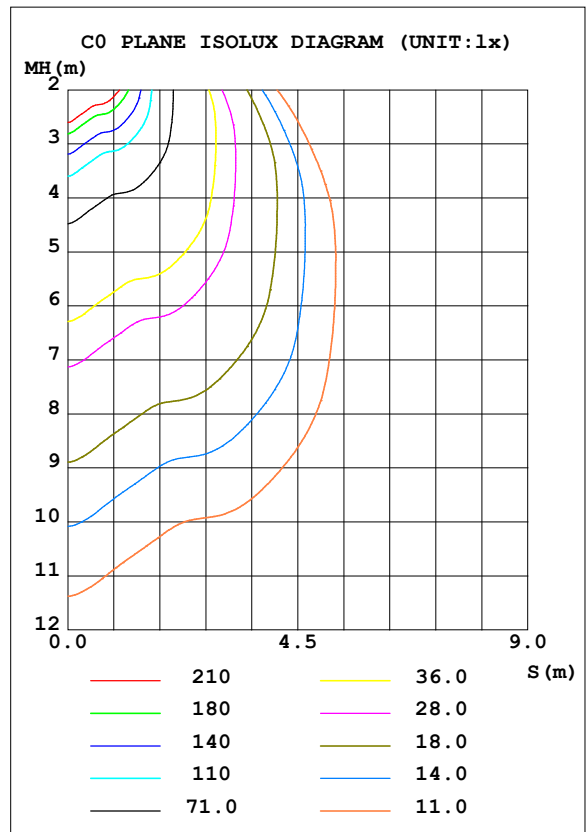
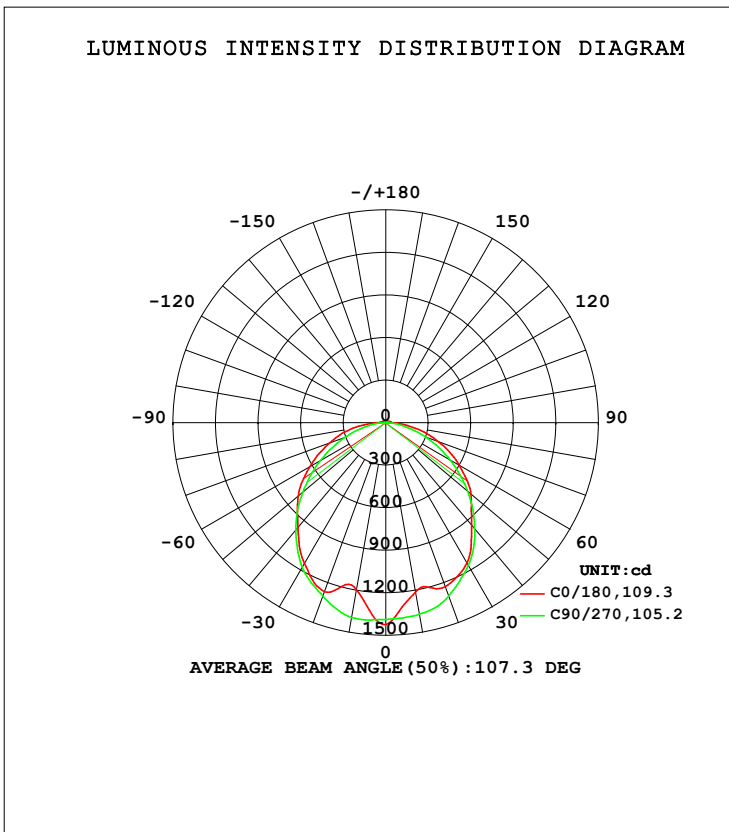


LUMINAIRE PHOTOMETRIC TEST REPORT

Test:U:240.28V I:0.1160A P:26.952W PF:0.9669 Freq:49.99Hz Lamp Flux:3948.19x1 lm		
NAME: S29696	TYPE:LED NCF	WEIGHT:
SPEC.:27W 4000K	DIM.: 1800x96x79mm	SERIAL No.:
MFR.:	SUR.:1800x96mm	Shielding Angle:

DATA OF LAMP		PHOTOMETRIC DATA Eff: 146.49 lm/W			
MODEL	S29696	I _{max} (cd)	1424	S/MH (C0/180)	1.21
NOMINAL POWER (W)	26.9524	LOR (%)	100.0	S/MH (C90/270)	1.26
RATED VOLTAGE (V)	240	TOTAL FLUX (lm)	3948.2	η UP, DN (C0-180)	1.3, 48.3
NOMINAL FLUX (lm)	3948.19	CIE CLASS	DIRECT	η UP, DN (C180-360)	1.3, 49.0
LAMPS INSIDE	1	η up (%)	2.7	CIBSE SHR NOM	1.25
TEST VOLTAGE (V)	240.28	η down (%)	97.3	CIBSE SHR MAX	1.35



C Range: 0 - 360DEG
 C Interval: 45.0DEG
 Test Speed: HIGH
 Temperature: 25.3DEG
 Operators:
 Test Date: 2024-04-28

γ Range: 0 - 180DEG
 γ Interval: 1.0DEG
 Test System: EVERFINE GO-2000A_V1 SYSTEM V2.00.421
 Humidity: 65.0%
 Test Distance: 11.498m [K=1.0000]
 Remarks:

ZONAL FLUX DIAGRAM

ZONAL FLUX DIAGRAM:

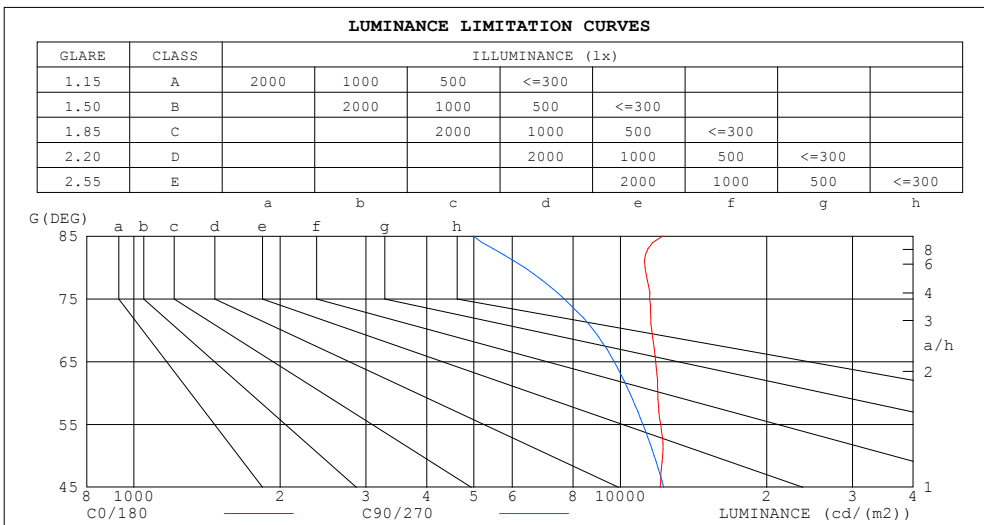
γ	C0	C45	C90	C135	C180	C225	C270	C315	γ	☉ zone	☉ total	lum, lamp
10	1213	1267	1372	1213	1197	1243	1396	1257	0- 10	126.2	126.2	3.2,3.2
20	1231	1161	1300	1165	1268	1156	1301	1144	10- 20	348.3	474.5	12,12
30	1145	1117	1164	1134	1147	1138	1180	1108	20- 30	550.1	1025	26,26
40	942.1	970.9	974.6	959.5	963.8	960.3	986.6	966.4	30- 40	662.6	1687	42.7,42.7
50	786.1	744.3	754.5	754.8	806.7	751.8	765.0	743.2	40- 50	666.3	2353	59.6,59.6
60	597.3	575.9	522.9	574.4	615.6	578.2	531.3	575.2	50- 60	597.3	2951	74.7,74.7
70	396.9	393.0	301.5	393.0	423.2	399.0	308.3	396.2	60- 70	469.2	3420	86.6,86.6
80	195.2	210.7	110.3	223.0	233.7	227.8	117.0	212.3	70- 80	298.2	3718	94.2,94.2
90	53.22	72.60	13.07	74.90	64.00	80.38	14.13	76.16	80- 90	124.9	3843	97.3,97.3
100	29.43	29.48	10.01	30.44	29.56	30.51	9.785	30.38	90-100	39.37	3882	98.3,98.3
110	24.51	19.56	8.198	21.00	25.52	19.99	7.619	20.36	100-110	22.57	3905	98.9,98.9
120	17.64	10.73	7.229	13.40	17.94	13.47	6.387	11.99	110-120	15.16	3920	99.3,99.3
130	12.60	7.996	6.662	8.830	12.00	8.766	6.104	8.213	120-130	9.351	3929	99.5,99.5
140	9.582	7.922	7.419	8.322	8.563	8.021	6.863	7.596	130-140	6.463	3936	99.7,99.7
150	8.922	8.305	8.112	8.413	8.163	8.030	7.739	7.780	140-150	5.076	3941	99.8,99.8
160	8.938	8.764	8.596	8.747	8.572	8.413	8.430	8.288	150-160	3.873	3945	99.9,99.9
170	9.347	9.122	8.997	9.047	9.256	8.913	8.923	8.797	160-170	2.498	3947	100,100
180	9.564	9.255	9.205	9.155	9.606	9.230	9.214	9.064	170-180	0.8735	3948	100,100
DEG	LUMINOUS INTENSITY:cd									UNIT:lm		

C Range: 0 - 360DEG
 C Interval: 45.0DEG
 Test Speed: HIGH
 Temperature:25.3DEG
 Operators:
 Test Date:2024-04-28

γ Range: 0 - 180DEG
 γ Interval: 1.0DEG
 Test System:EVERFINE GO-2000A_V1 SYSTEM V2.00.421
 Humidity:65.0%
 Test Distance:11.498m [K=1.0000]
 Remarks:

LUMINANCE LIMITATION CURVES

Test:U:240.28V I:0.1160A P:26.952W PF:0.9669 Freq:49.99Hz Lamp Flux:3948.19x1 lm		
NAME: S29696	TYPE:LED NCF	WEIGHT:
SPEC.:27W 4000K	DIM.: 1800x96x79mm	SERIAL No.:
MFR.:	SUR.:1800x96mm	Shielding Angle:



LUMINANCE cd/(m2)		
G (DEG)	C0/180	C90/270
85	12238	4982
80	11242	6351
75	11491	7661
70	11606	8815
65	11824	9708
60	11946	10458
55	12107	11134
50	12229	11738
45	12084	12286

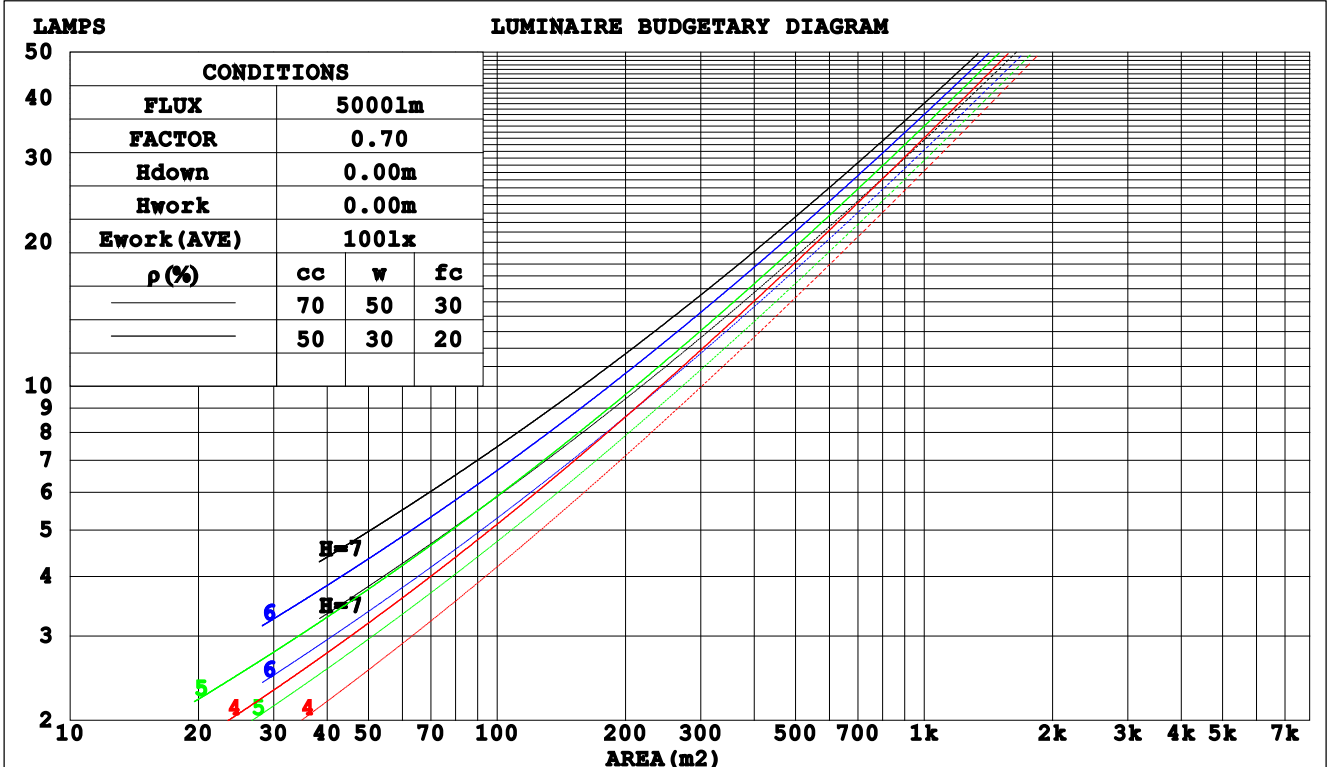
C Range: 0 - 360DEG
C Interval: 45.0DEG
Test Speed: HIGH
Temperature:25.3DEG
Operators:
Test Date:2024-04-28

γ Range: 0 - 180DEG
γ Interval: 1.0DEG
Test System:EVERFINE GO-2000A_V1 SYSTEM V2.00.421
Humidity:65.0%
Test Distance:11.498m [K=1.0000]
Remarks:

CU AND LUMINAIRE BUDGETARY ESTIMATE DIAGRAM

Test:U:240.28V I:0.1160A P:26.952W PF:0.9669 Freq:49.99Hz Lamp Flux:3948.19x1 lm		
NAME: S29696	TYPE:LED NCF	WEIGHT:
SPEC.:27W 4000K	DIM.: 1800x96x79mm	SERIAL No.:
MFR.:	SUR.:1800x96mm	Shielding Angle:

pcc	80%			70%			50%			30%			10%			0
	50%	30%	10%	50%	30%	10%	50%	30%	10%	50%	30%	10%	50%	30%	10%	0
pw																
pfc																
RCR	RCR:Room Cavity Ratio			Coefficients of Utilization(CU)												
0.0	1.18	1.18	1.18	1.15	1.15	1.15	1.10	1.10	1.10	1.04	1.04	1.04	.00	.00	.00	.97
1.0	1.02	.98	.94	.00	.96	.92	.95	.92	.89	.91	.88	.85	.87	.84	.82	.80
2.0	.89	.82	.76	.87	.80	.75	.83	.77	.73	.79	.75	.71	.76	.72	.69	.66
3.0	.78	.70	.63	.76	.68	.62	.73	.66	.61	.70	.64	.59	.67	.62	.58	.56
4.0	.69	.60	.53	.68	.59	.53	.65	.57	.52	.62	.56	.51	.59	.54	.50	.47
5.0	.62	.53	.46	.60	.52	.45	.58	.50	.45	.56	.49	.44	.53	.48	.43	.41
6.0	.55	.46	.40	.54	.46	.40	.52	.45	.39	.50	.44	.38	.48	.43	.38	.36
7.0	.50	.41	.35	.49	.41	.35	.48	.40	.35	.46	.39	.34	.44	.38	.34	.32
8.0	.46	.37	.31	.45	.37	.31	.43	.36	.31	.42	.35	.30	.41	.35	.30	.28
9.0	.42	.34	.28	.41	.33	.28	.40	.33	.28	.39	.32	.27	.38	.32	.27	.25
10.0	.39	.31	.26	.38	.31	.25	.37	.30	.25	.36	.29	.25	.35	.29	.25	.23



C Range: 0 - 360DEG
 C Interval: 45.0DEG
 Test Speed: HIGH
 Temperature:25.3DEG
 Operators:
 Test Date:2024-04-28

γ Range: 0 - 180DEG
 γ Interval: 1.0DEG
 Test System:EVERFINE GO-2000A_V1 SYSTEM V2.00.421
 Humidity:65.0%
 Test Distance:11.498m [K=1.0000]
 Remarks:

WEC AND CCEC

Test:U:240.28V I:0.1160A P:26.952W PF:0.9669 Freq:49.99Hz Lamp Flux:3948.19x1 lm		
NAME: S29696	TYPE:LED NCF	WEIGHT:
SPEC.:27W 4000K	DIM.: 1800x96x79mm	SERIAL No.:
MFR.:	SUR.:1800x96mm	Shielding Angle:

pcc	80%			70%			50%			30%			10%			0
pw	50%	30%	10%	50%	30%	10%	50%	30%	10%	50%	30%	10%	50%	30%	10%	0
pfc	20%			20%			20%			20%			20%			0
RCR	RCR:Room Cavity Ratio						Wall Exitance Coefficients (WEC)									
0.0																
1.0	.325	.185	.059	.317	.181	.057	.302	.173	.055	.289	.167	.053	.276	.160	.052	
2.0	.300	.164	.050	.293	.161	.050	.279	.155	.048	.267	.150	.047	.256	.145	.046	
3.0	.275	.146	.044	.268	.144	.043	.257	.139	.042	.246	.135	.041	.236	.131	.040	
4.0	.252	.131	.038	.246	.129	.038	.236	.125	.037	.226	.122	.037	.217	.118	.036	
5.0	.232	.118	.034	.227	.117	.034	.218	.113	.033	.209	.110	.033	.201	.107	.032	
6.0	.215	.108	.031	.210	.106	.031	.202	.104	.030	.194	.101	.030	.187	.098	.029	
7.0	.200	.099	.028	.196	.097	.028	.188	.095	.027	.181	.093	.027	.175	.091	.027	
8.0	.186	.091	.026	.183	.090	.025	.176	.088	.025	.170	.086	.025	.164	.084	.024	
9.0	.174	.084	.024	.171	.083	.023	.165	.082	.023	.159	.080	.023	.154	.078	.023	
10.0	.164	.079	.022	.161	.078	.022	.155	.076	.021	.150	.075	.021	.145	.073	.021	

pcc	80%			70%			50%			30%			10%			0
pw	50%	30%	10%	50%	30%	10%	50%	30%	10%	50%	30%	10%	50%	30%	10%	0
pfc	20%			20%			20%			20%			20%			0
RCR	RCR:Room Cavity Ratio						Ceiling Cavity Exitance Coefficients (CCEC)									
0.0	.211	.211	.211	.180	.180	.180	.123	.123	.123	.071	.071	.071	.023	.023	.023	
1.0	.202	.176	.154	.173	.151	.132	.118	.104	.091	.068	.060	.053	.022	.019	.017	
2.0	.194	.152	.118	.166	.131	.102	.114	.091	.071	.066	.053	.042	.021	.017	.014	
3.0	.186	.135	.094	.160	.117	.082	.110	.081	.057	.063	.047	.034	.020	.015	.011	
4.0	.178	.122	.079	.153	.105	.068	.105	.073	.048	.061	.043	.028	.020	.014	.009	
5.0	.171	.112	.068	.147	.097	.059	.101	.067	.042	.059	.040	.025	.019	.013	.008	
6.0	.164	.103	.060	.141	.089	.052	.097	.063	.037	.056	.037	.022	.018	.012	.007	
7.0	.157	.096	.054	.135	.084	.047	.093	.059	.033	.054	.035	.020	.017	.011	.007	
8.0	.150	.091	.050	.129	.079	.043	.089	.055	.031	.052	.033	.018	.017	.011	.006	
9.0	.144	.086	.046	.124	.074	.040	.086	.052	.029	.050	.031	.017	.016	.010	.006	
10.0	.138	.081	.044	.119	.071	.038	.083	.050	.027	.048	.029	.016	.016	.010	.005	

C Range: 0 - 360DEG
 C Interval: 45.0DEG
 Test Speed: HIGH
 Temperature:25.3DEG
 Operators:
 Test Date:2024-04-28

γ Range: 0 - 180DEG
 γ Interval: 1.0DEG
 Test System:EVERFINE GO-2000A_V1 SYSTEM V2.00.421
 Humidity:65.0%
 Test Distance:11.498m [K=1.0000]
 Remarks:

UGR(Unified Glare Rating) Table

Test:U:240.28V I:0.1160A P:26.952W PF:0.9669 Freq:49.99Hz Lamp Flux:3948.19x1 lm		
NAME: S29696	TYPE:LED NCF	WEIGHT:
SPEC.:27W 4000K	DIM.: 1800x96x79mm	SERIAL No.:
MFR.:	SUR.:1800x96mm	Shielding Angle:

ceiling/cavity	0.7	0.7	0.5	0.5	0.3	0.7	0.7	0.5	0.5	0.3
walls	0.5	0.3	0.5	0.3	0.3	0.5	0.3	0.5	0.3	0.3
working plane	0.2	0.2	0.2	0.2	0.2	0.2	0.2	0.2	0.2	0.2
Room dimensions	Viewed crosswise					Viewed endwise				
x = 2H y = 2H	21.3	22.8	21.6	23.1	23.3	20.9	22.4	21.2	22.7	22.9
3H	23.0	24.4	23.4	24.7	25.0	22.3	23.7	22.6	24.0	24.3
4H	23.8	25.1	24.1	25.4	25.7	22.8	24.1	23.2	24.4	24.7
6H	24.4	25.6	24.8	26.0	26.3	23.1	24.4	23.5	24.7	25.0
8H	24.6	25.8	25.0	26.2	26.5	23.2	24.4	23.6	24.7	25.1
12H	24.8	26.0	25.2	26.3	26.7	23.2	24.4	23.6	24.7	25.1
4H 2H	21.9	23.2	22.3	23.5	23.9	21.6	22.9	22.0	23.2	23.6
3H	23.8	25.0	24.2	25.3	25.7	23.2	24.4	23.6	24.7	25.1
4H	24.8	25.8	25.2	26.2	26.6	23.9	24.9	24.3	25.3	25.7
6H	25.5	26.5	26.0	26.9	27.3	24.4	25.3	24.8	25.7	26.1
8H	25.8	26.7	26.3	27.1	27.6	24.5	25.4	25.0	25.8	26.2
12H	26.1	26.9	26.6	27.3	27.8	24.6	25.4	25.1	25.8	26.3
8H 4H	25.1	26.0	25.5	26.4	26.8	24.3	25.2	24.8	25.6	26.1
6H	26.1	26.8	26.5	27.2	27.7	25.0	25.8	25.5	26.2	26.7
8H	26.5	27.1	27.0	27.6	28.1	25.3	25.9	25.8	26.4	26.9
12H	26.9	27.5	27.4	28.0	28.5	25.5	26.0	26.0	26.5	27.1
12H 4H	25.1	25.9	25.6	26.3	26.8	24.4	25.2	24.9	25.6	26.1
6H	26.2	26.8	26.7	27.3	27.8	25.2	25.8	25.7	26.3	26.8
8H	26.7	27.2	27.2	27.7	28.3	25.5	26.1	26.1	26.6	27.1
Variations with the observer position at spacings:										
S = 1.0H	+ 0.1 / - 0.2					+ 0.2 / - 0.2				
1.5H	+ 0.1 / - 0.3					+ 0.2 / - 0.3				
2.0H	+ 0.1 / - 0.3					+ 0.1 / - 0.3				

CIE Pub.117, 3948 lm Total Lamp Luminous Flux Corrected (8log(F/F0) = 4.8)
 Area: 0.1 m2

C Range: 0 - 360DEG
 C Interval: 45.0DEG
 Test Speed: HIGH
 Temperature:25.3DEG
 Operators:
 Test Date:2024-04-28

γ Range: 0 - 180DEG
 γ Interval: 1.0DEG
 Test System:EVERFINE GO-2000A_V1 SYSTEM V2.00.421
 Humidity:65.0%
 Test Distance:11.498m [K=1.0000]
 Remarks:

UTILIZATION FACTORS TABLE

Test:U:240.28V I:0.1160A P:26.952W PF:0.9669 Freq:49.99Hz Lamp Flux:3948.19x1 lm		
NAME: S29696	TYPE:LED NCF	WEIGHT:
SPEC.:27W 4000K	DIM.: 1800x96x79mm	SERIAL No.:
MFR.:	SUR.:1800x96mm	Shielding Angle:

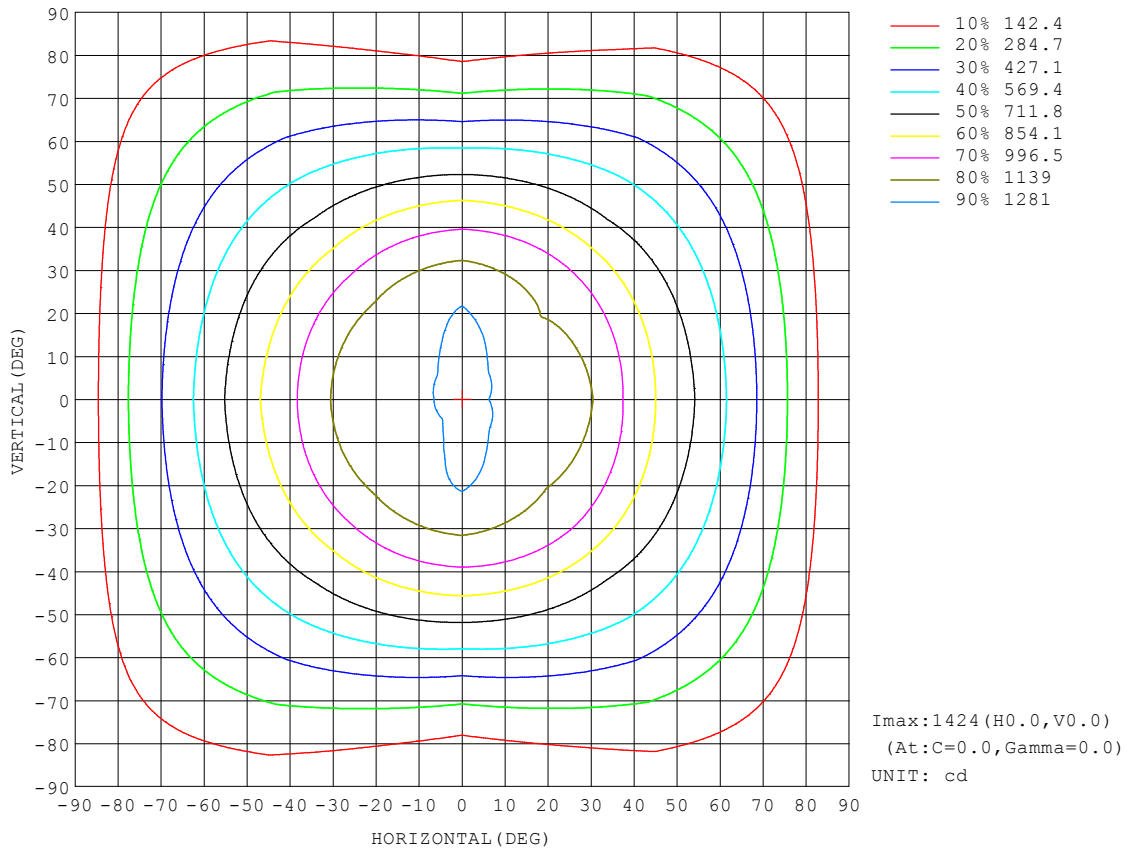
REFLECTANCE										
Ceiling	0.8	0.8	0.8	0.7	0.7	0.7	0.5	0.5	0.5	0
Walls	0.7	0.5	0.3	0.7	0.5	0.3	0.7	0.5	0.3	0
Working plane	0.2	0.2	0.2	0.2	0.2	0.2	0.2	0.2	0.2	0
ROOM INDEX	UTILIZATION FACTORS (PERCENT) $k(RI) \times RCR = 5$									
k = 0.60	56	45	38	56	44	38	54	44	37	31
0.80	66	54	47	65	54	47	63	53	46	39
1.00	74	63	56	73	62	55	71	64	55	47
1.25	81	71	63	80	70	63	77	68	62	54
1.50	86	76	69	85	75	68	81	73	67	59
2.00	93	84	78	91	83	77	87	80	75	67
2.50	97	89	83	95	87	82	91	85	80	71
3.00	101	93	87	98	92	86	94	88	84	75
4.00	105	99	94	102	97	92	97	93	89	79
5.00	107	102	98	105	100	96	100	96	92	82
ROOM INDEX	UF (total)									Direct
According to DIN EN 13032-2 2004			Suspended				SHRNOM = 1.25			

C Range: 0 - 360DEG
 C Interval: 45.0DEG
 Test Speed: HIGH
 Temperature:25.3DEG
 Operators:
 Test Date:2024-04-28

γ Range: 0 - 180DEG
 γ Interval: 1.0DEG
 Test System:EVERFINE GO-2000A_V1 SYSTEM V2.00.421
 Humidity:65.0%
 Test Distance:11.498m [K=1.0000]
 Remarks:

ISOCANDELA DIAGRAM

Test:U:240.28V I:0.1160A P:26.952W PF:0.9669 Freq:49.99Hz Lamp Flux:3948.19x1 lm		
NAME: S29696	TYPE:LED NCF	WEIGHT:
SPEC.:27W 4000K	DIM.: 1800x96x79mm	SERIAL No.:
MFR.:	SUR.:1800x96mm	Shielding Angle:



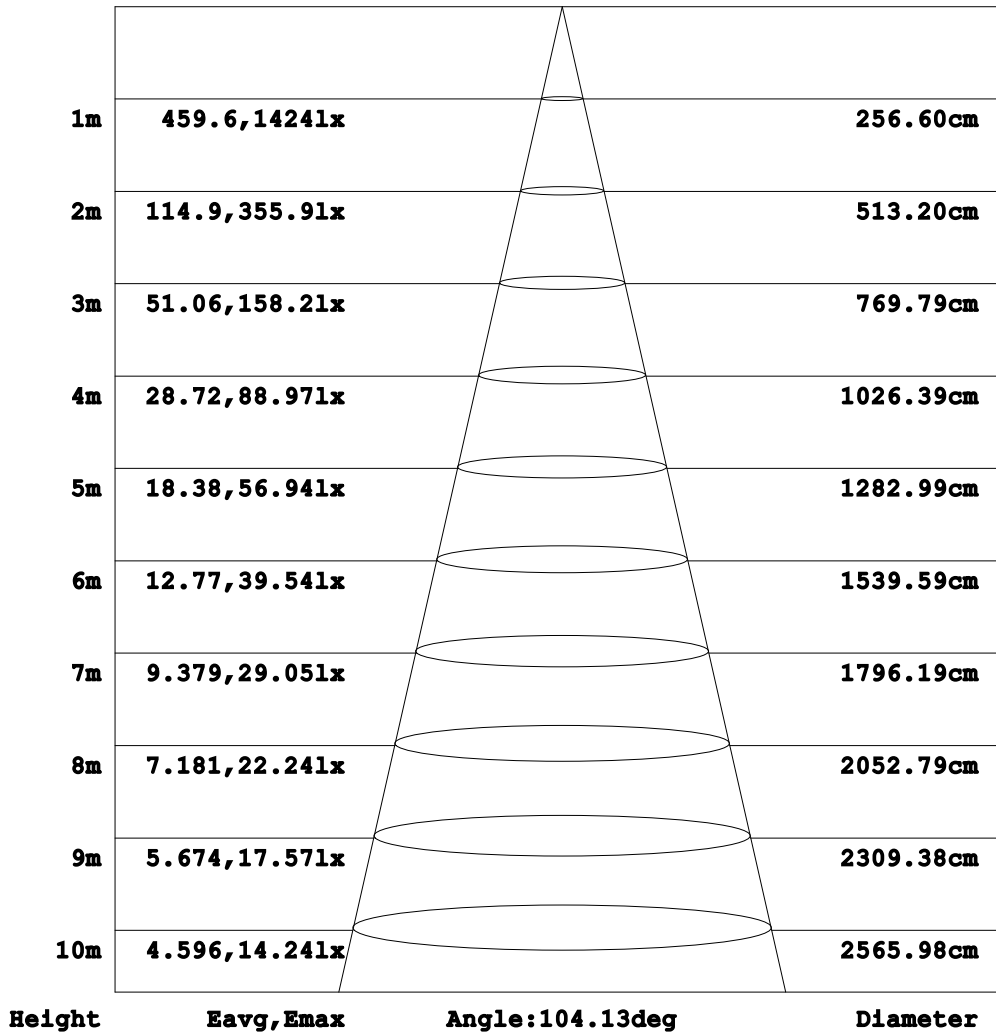
C Range: 0 - 360DEG
C Interval: 45.0DEG
Test Speed: HIGH
Temperature:25.3DEG
Operators:
Test Date:2024-04-28

γ Range: 0 - 180DEG
γ Interval: 1.0DEG
Test System:EVERFINE GO-2000A_V1 SYSTEM V2.00.421
Humidity:65.0%
Test Distance:11.498m [K=1.0000]
Remarks:

AAI Figure

Test:U:240.28V I:0.1160A P:26.952W PF:0.9669 Freq:49.99Hz Lamp Flux:3948.19x1 lm		
NAME: S29696	TYPE:LED NCF	WEIGHT:
SPEC.:27W 4000K	DIM.: 1800x96x79mm	SERIAL No.:
MFR.:	SUR.:1800x96mm	Shielding Angle:

Flux out:2543 lm



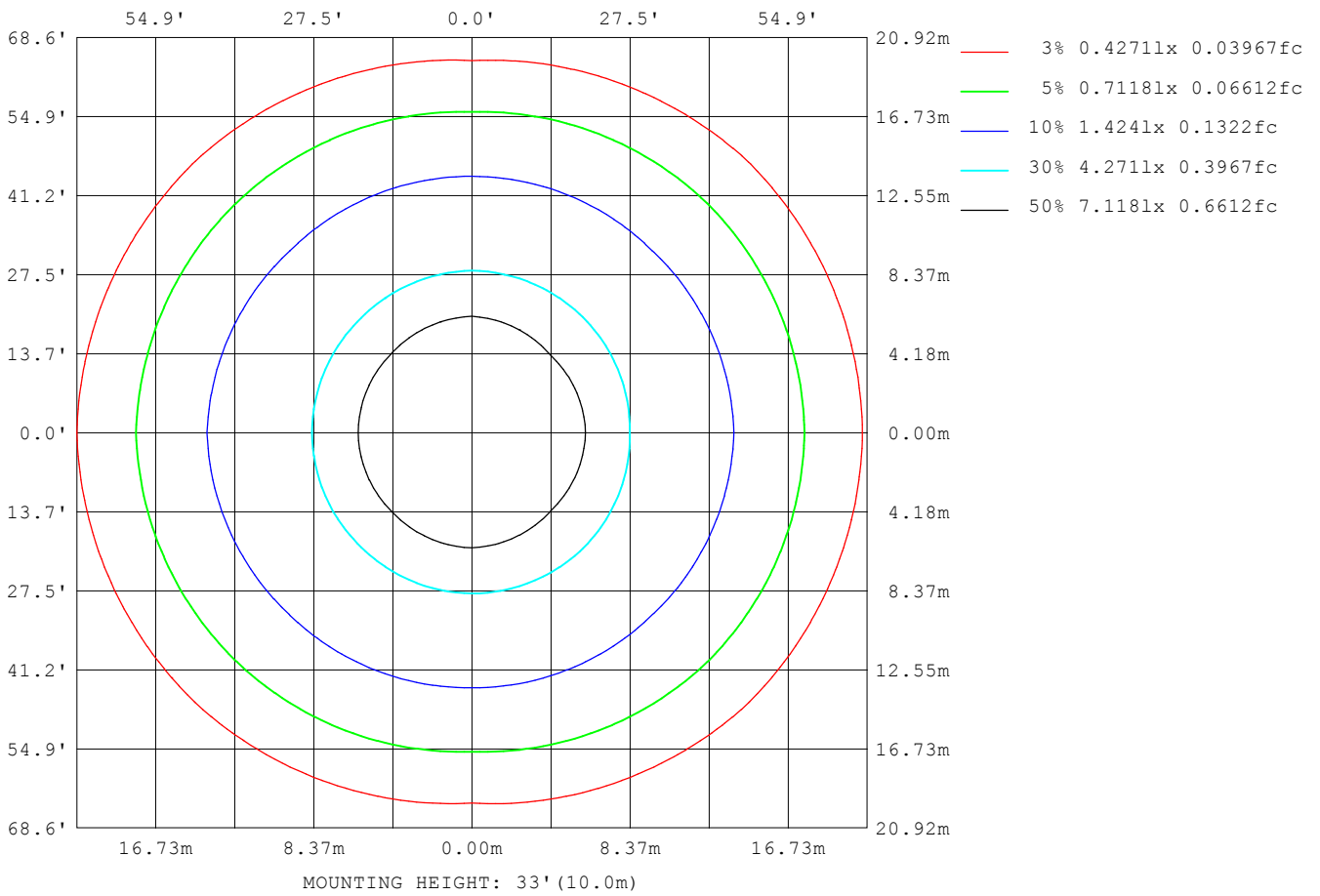
Note:The Curves indicate the illuminated area and the average illumination when the luminaire is at different distance.

C Range: 0 - 360DEG
 C Interval: 45.0DEG
 Test Speed: HIGH
 Temperature:25.3DEG
 Operators:
 Test Date:2024-04-28

γ Range: 0 - 180DEG
 γ Interval: 1.0DEG
 Test System:EVERFINE GO-2000A_V1 SYSTEM V2.00.421
 Humidity:65.0%
 Test Distance:11.498m [K=1.0000]
 Remarks:

ISOLUX DIAGRAM

Test:U:240.28V I:0.1160A P:26.952W PF:0.9669 Freq:49.99Hz Lamp Flux:3948.19x1 lm		
NAME: S29696	TYPE:LED NCF	WEIGHT:
SPEC.:27W 4000K	DIM.: 1800x96x79mm	SERIAL No.:
MFR.:	SUR.:1800x96mm	Shielding Angle:



C Range: 0 - 360DEG
C Interval: 45.0DEG
Test Speed: HIGH
Temperature:25.3DEG
Operators:
Test Date:2024-04-28

γ Range: 0 - 180DEG
γ Interval: 1.0DEG
Test System:EVERFINE GO-2000A_V1 SYSTEM V2.00.421
Humidity:65.0%
Test Distance:11.498m [K=1.0000]
Remarks:

LED Avg.L Report

Test:U:240.28V I:0.1160A P:26.952W PF:0.9669 Freq:49.99Hz Lamp Flux:3948.19x1 lm		
NAME: S29696	TYPE:LED NCF	WEIGHT:
SPEC.:27W 4000K	DIM.: 1800x96x79mm	SERIAL No.:
MFR.:	SUR.:1800x96mm	Shielding Angle:

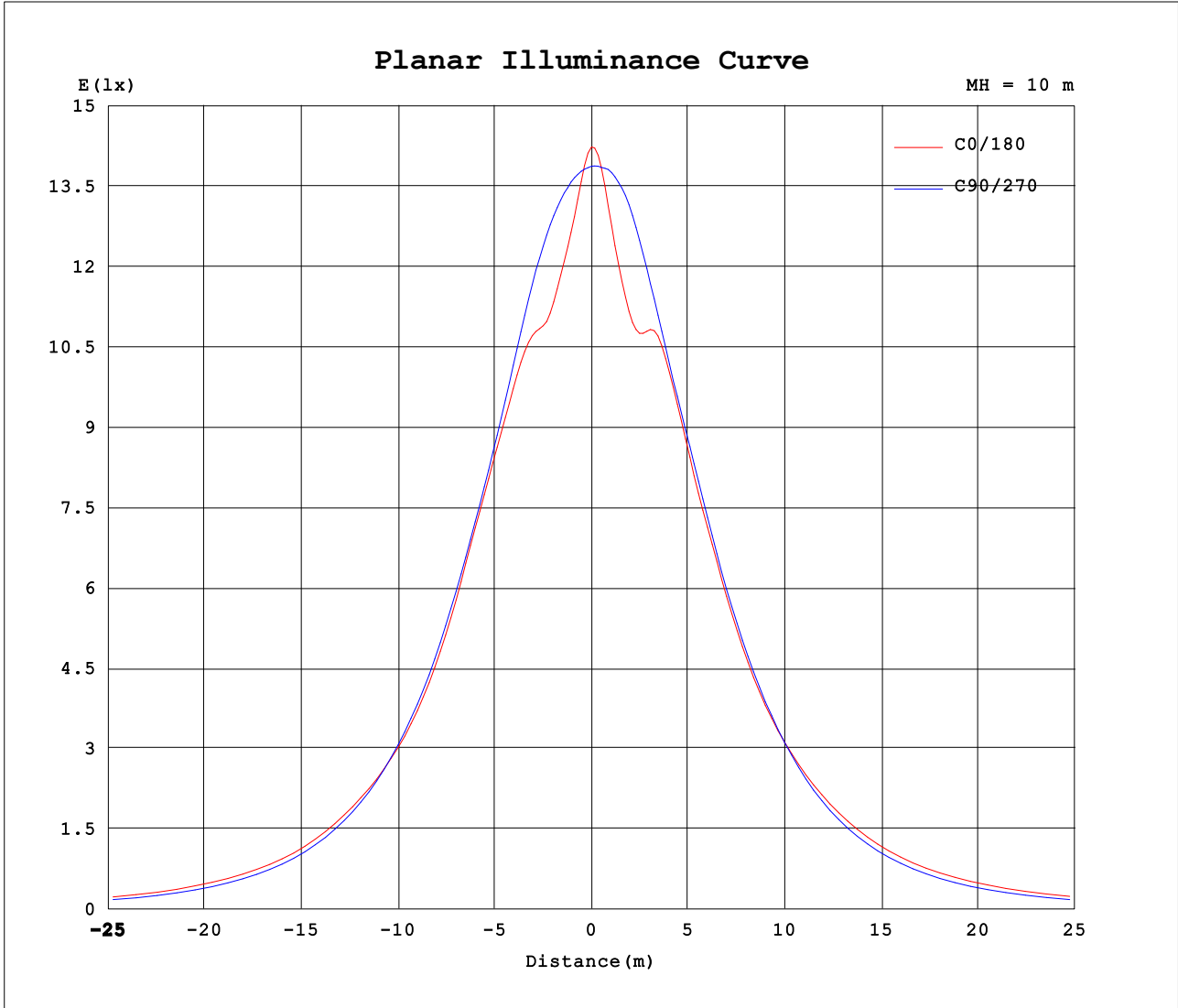
AvgL	cd/m2
L_0~180 (65) av	12076
L_0~180 (75) av	12203
L_0~180 (85) av	13774
L_90~270 (65) av	9781
L_90~270 (75) av	7814
L_90~270 (85) av	5222
L_45 (65) av	11497
L_45 (75) av	11777
L_45 (85) av	15668

Standard: GB/T 29293-2012

C Range: 0 - 360DEG
 C Interval: 45.0DEG
 Test Speed: HIGH
 Temperature:25.3DEG
 Operators:
 Test Date:2024-04-28

γ Range: 0 - 180DEG
 γ Interval: 1.0DEG
 Test System:EVERFINE GO-2000A_V1 SYSTEM V2.00.421
 Humidity:65.0%
 Test Distance:11.498m [K=1.0000]
 Remarks:

Planar Illuminance Curve



C Range: 0 - 360DEG
 C Interval: 45.0DEG
 Test Speed: HIGH
 Temperature:25.3DEG
 Operators:
 Test Date:2024-04-28

γ Range: 0 - 180DEG
 γ Interval: 1.0DEG
 Test System:EVERFINE GO-2000A_V1 SYSTEM V2.00.421
 Humidity:65.0%
 Test Distance:11.498m [K=1.0000]
 Remarks:

LUMINOUS DISTRIBUTION INTENSITY DATA

Test:U:240.28V I:0.1160A P:26.952W PF:0.9669 Freq:49.99Hz Lamp Flux:3948.19x1 lm		
NAME: S29696	TYPE:LED NCF	WEIGHT:
SPEC.:27W 4000K	DIM.: 1800x96x79mm	SERIAL No.:
MFR.:	SUR.:1800x96mm	Shielding Angle:

Table--1

UNIT: cd

C (DEG) \ γ (DEG)	0	45	90	135	180	225	270	315										
0	1424	1420	1387	1396	1424	1420	1387	1396										
5	1309	1365	1382	1314	1328	1349	1397	1356										
10	1213	1267	1372	1213	1197	1243	1396	1257										
15	1203	1199	1350	1149	1193	1163	1358	1185										
20	1231	1161	1300	1165	1268	1156	1301	1144										
25	1196	1161	1233	1196	1224	1186	1244	1143										
30	1145	1117	1164	1134	1147	1138	1180	1108										
35	1051	1053	1081	1051	1063	1053	1087	1049										
40	942	971	975	959	964	960	987	966										
45	854	855	869	853	883	851	882	854										
50	786	744	755	755	807	752	765	743										
55	694	659	639	666	716	665	648	658										
60	597	576	523	574	616	578	531	575										
65	500	484	410	484	521	489	416	487										
70	397	393	301	393	423	399	308	396										
75	297	300	198	305	334	312	206	302										
80	195	211	110	223	234	228	117	212										
85	107	131	43.4	139	133	147	47.6	129										
90	53.2	72.6	13.1	74.9	64.0	80.4	14.1	76.2										
95	34.6	42.5	11.0	44.2	37.0	45.8	11.7	43.1										
100	29.4	29.5	10.0	30.4	29.6	30.5	9.78	30.4										
105	28.1	23.2	9.00	24.2	28.7	23.6	8.53	24.4										
110	24.5	19.6	8.20	21.0	25.5	20.0	7.62	20.4										
115	20.6	14.7	7.58	17.2	21.2	16.9	6.86	16.2										
120	17.6	10.7	7.23	13.4	17.9	13.5	6.39	12.0										
125	15.0	8.70	6.95	10.5	14.8	10.6	6.25	9.56										
130	12.6	8.00	6.66	8.83	12.0	8.77	6.10	8.21										
135	10.7	7.84	7.00	8.42	9.93	8.22	6.37	7.73										
140	9.58	7.92	7.42	8.32	8.56	8.02	6.86	7.60										
145	9.16	8.09	7.75	8.34	8.26	8.00	7.31	7.58										
150	8.92	8.31	8.11	8.41	8.16	8.03	7.74	7.78										
155	8.90	8.51	8.39	8.55	8.32	8.18	8.14	8.02										
160	8.94	8.76	8.60	8.75	8.57	8.41	8.43	8.29										
165	9.21	8.97	8.85	8.90	8.91	8.66	8.71	8.55										
170	9.35	9.12	9.00	9.05	9.26	8.91	8.92	8.80										
175	9.46	9.26	9.15	9.16	9.43	9.21	9.11	8.92										
180	9.56	9.26	9.21	9.16	9.61	9.23	9.21	9.06										

C Range: 0 - 360DEG
 C Interval: 45.0DEG
 Test Speed: HIGH
 Temperature:25.3DEG
 Operators:
 Test Date:2024-04-28

γ Range: 0 - 180DEG
 γ Interval: 1.0DEG
 Test System:EVERFINE GO-2000A_V1 SYSTEM V2.00.421
 Humidity:65.0%
 Test Distance:11.498m [K=1.0000]
 Remarks: