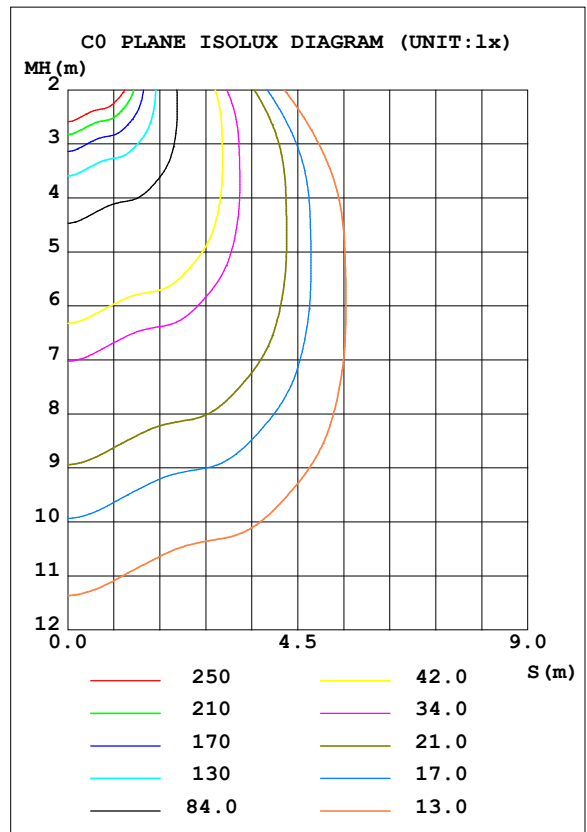
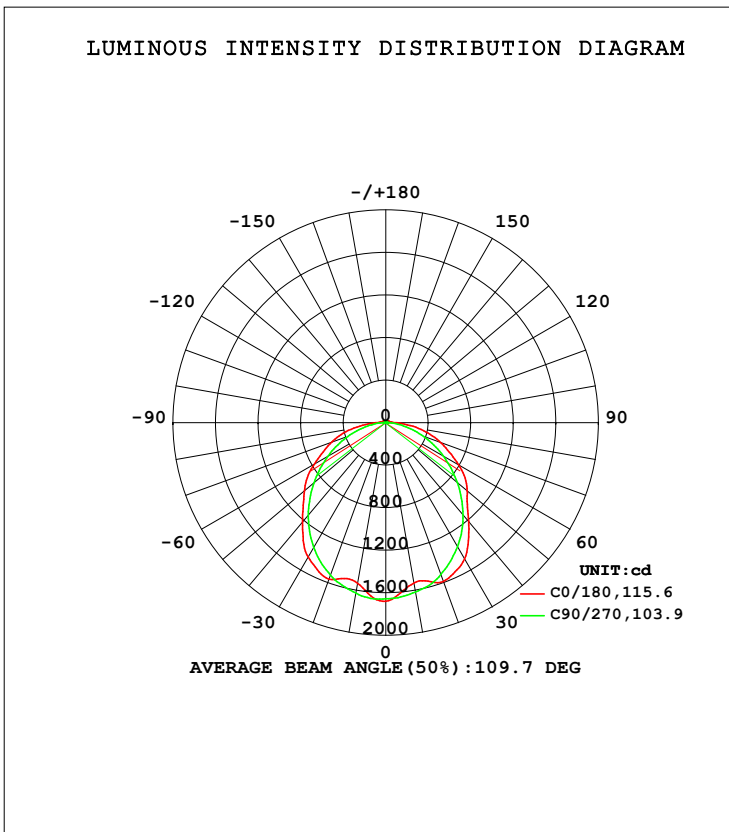


LUMINAIRE PHOTOMETRIC TEST REPORT

Test:U:240.29V I:0.1835A P:42.074W PF:0.9543 Freq:49.99Hz Lamp Flux:4956.08x1 lm		
NAME: S29691	TYPE:LED NCF	WEIGHT:
SPEC.:42W 4000K	DIM.: 1200x96x79mm	SERIAL No.:
MFR.:	SUR.:1200x96mm	Shielding Angle:

DATA OF LAMP		PHOTOMETRIC DATA Eff: 117.80 lm/W			
MODEL	S29691	I <sub>max</sub> (cd)	1680	S/MH (C0/180)	1.29
NOMINAL POWER (W)	42.0736	LOR (%)	100.0	S/MH (C90/270)	1.22
RATED VOLTAGE (V)	240	TOTAL FLUX (lm)	4956.1	η UP, DN (C0-180)	1.5, 48.5
NOMINAL FLUX (lm)	4956.08	CIE CLASS	DIRECT	η UP, DN (C180-360)	1.6, 48.5
LAMPS INSIDE	1	η up (%)	3.0	CIBSE SHR NOM	1.25
TEST VOLTAGE (V)	240.287	η down (%)	97.0	CIBSE SHR MAX	1.35



C Range: 0 - 360DEG  
 C Interval: 45.0DEG  
 Test Speed: HIGH  
 Temperature: 25.3DEG  
 Operators:  
 Test Date: 2024-04-28

γ Range: 0 - 180DEG  
 γ Interval: 1.0DEG  
 Test System: EVERFINE GO-2000A\_V1 SYSTEM V2.00.421  
 Humidity: 65.0%  
 Test Distance: 11.498m [K=1.0000]  
 Remarks:

ZONAL FLUX DIAGRAM

ZONAL FLUX DIAGRAM:

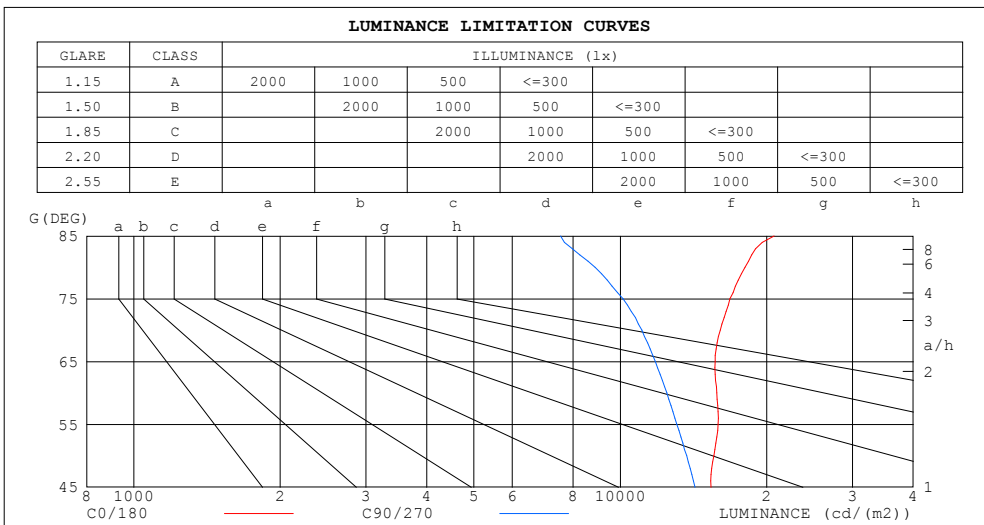
$\gamma$	C0	C45	C90	C135	C180	C225	C270	C315	$\gamma$	☉ zone	☉ total	lum, lamp
10	1531	1552	1616	1514	1535	1555	1628	1542	0- 10	153.1	153.1	3.09,3.09
20	1588	1467	1519	1452	1566	1460	1525	1431	10- 20	430.5	583.6	11.8,11.8
30	1481	1425	1348	1386	1461	1407	1356	1398	20- 30	677.2	1261	25.4,25.4
40	1212	1248	1131	1190	1220	1219	1135	1243	30- 40	820.1	2081	42,42
50	1001	962.0	879.7	932.2	1000.0	951.8	881.2	958.1	40- 50	826.5	2907	58.7,58.7
60	789.2	711.8	623.1	697.6	773.8	709.4	625.0	704.8	50- 60	738.4	3646	73.6,73.6
70	548.8	509.6	378.6	485.4	544.1	492.5	379.9	502.9	60- 70	584.3	4230	85.4,85.4
80	313.4	309.8	154.2	291.3	305.9	299.9	155.8	298.5	70- 80	394.7	4625	93.3,93.3
90	94.32	118.5	21.95	104.0	89.18	111.7	23.09	129.6	80- 90	180.5	4805	97,97
100	42.84	45.56	10.41	45.47	44.94	45.70	15.47	50.49	90-100	61.52	4867	98.2,98.2
110	32.12	26.46	7.296	28.47	32.82	27.79	8.571	30.14	100-110	31.42	4898	98.8,98.8
120	24.52	15.89	7.437	18.03	25.10	17.85	8.130	19.21	110-120	20.41	4919	99.2,99.2
130	16.99	9.922	8.079	12.11	17.72	12.13	8.097	11.29	120-130	12.78	4931	99.5,99.5
140	11.62	10.10	9.162	10.68	12.69	10.60	8.855	10.11	130-140	8.583	4940	99.7,99.7
150	11.46	10.66	10.21	10.89	10.99	10.69	9.849	10.15	140-150	6.595	4947	99.8,99.8
160	11.70	11.32	11.02	11.32	11.30	11.29	10.84	10.73	150-160	5.034	4952	99.9,99.9
170	12.03	11.78	11.71	11.79	12.02	11.88	11.62	11.34	160-170	3.245	4955	100,100
180	12.32	12.31	11.97	11.94	12.40	12.20	12.05	11.84	170-180	1.138	4956	100,100
DEG	LUMINOUS INTENSITY:cd									UNIT:lm		

C Range: 0 - 360DEG  
 C Interval: 45.0DEG  
 Test Speed: HIGH  
 Temperature:25.3DEG  
 Operators:  
 Test Date:2024-04-28

$\gamma$  Range: 0 - 180DEG  
 $\gamma$  Interval: 1.0DEG  
 Test System:EVERFINE GO-2000A\_V1 SYSTEM V2.00.421  
 Humidity:65.0%  
 Test Distance:11.498m [K=1.0000]  
 Remarks:

**LUMINANCE LIMITATION CURVES**

Test:U:240.29V I:0.1835A P:42.074W PF:0.9543 Freq:49.99Hz Lamp Flux:4956.08x1 lm		
NAME: S29691	TYPE:LED NCF	WEIGHT:
SPEC.:42W 4000K	DIM.: 1200x96x79mm	SERIAL No.:
MFR.:	SUR.:1200x96mm	Shielding Angle:



LUMINANCE cd/(m2)		
G (DEG)	C0/180	C90/270
85	20703	7535
80	18048	8879
75	16805	10124
70	16045	11069
65	15661	11798
60	15785	12461
55	15886	13066
50	15569	13686
45	15360	14248

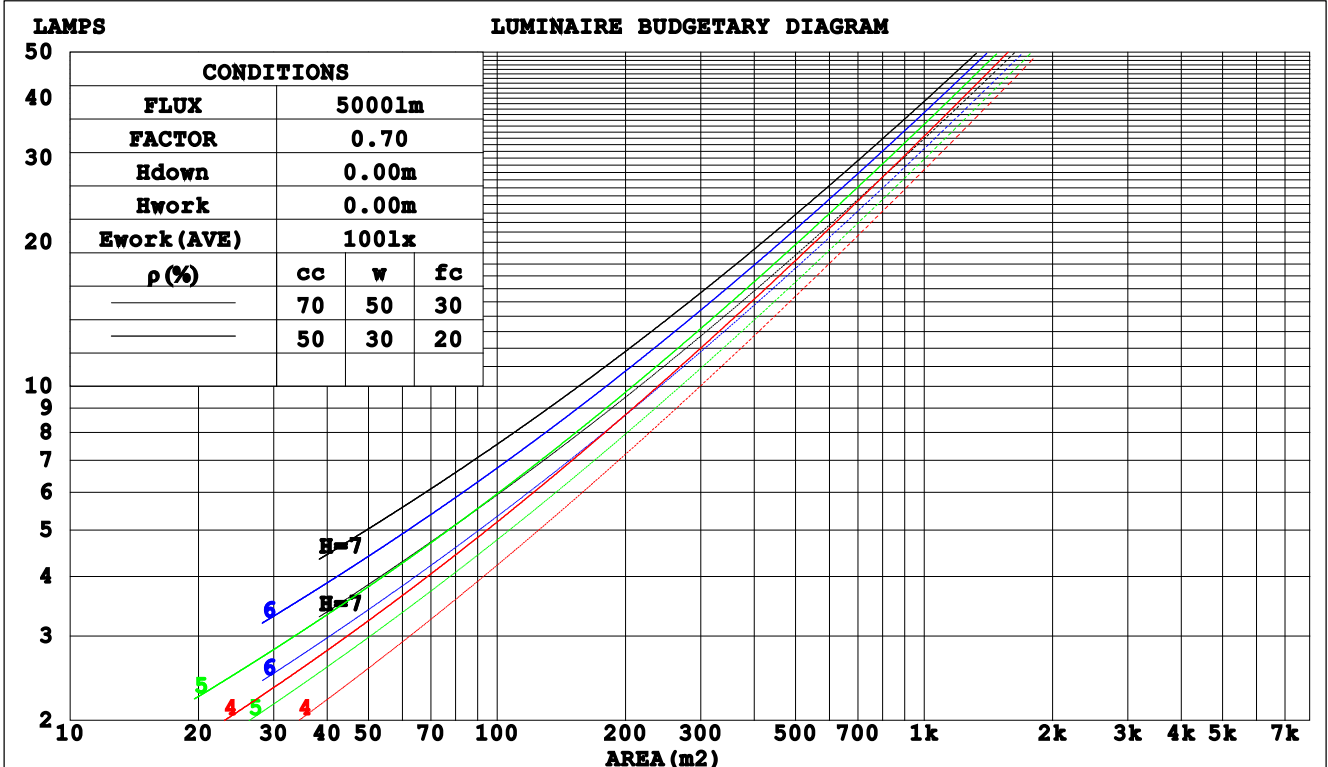
**C Range: 0 - 360DEG**  
**C Interval: 45.0DEG**  
**Test Speed: HIGH**  
**Temperature:25.3DEG**  
**Operators:**  
**Test Date:2024-04-28**

**γ Range: 0 - 180DEG**  
**γ Interval: 1.0DEG**  
**Test System:EVERFINE GO-2000A\_V1 SYSTEM V2.00.421**  
**Humidity:65.0%**  
**Test Distance:11.498m [K=1.0000]**  
**Remarks:**

CU AND LUMINAIRE BUDGETARY ESTIMATE DIAGRAM

Test:U:240.29V I:0.1835A P:42.074W PF:0.9543 Freq:49.99Hz Lamp Flux:4956.08x1 lm		
NAME: S29691	TYPE:LED NCF	WEIGHT:
SPEC.:42W 4000K	DIM.: 1200x96x79mm	SERIAL No.:
MFR.:	SUR.:1200x96mm	Shielding Angle:

pcc	80%			70%			50%			30%			10%			0
	50%	30%	10%	50%	30%	10%	50%	30%	10%	50%	30%	10%	50%	30%	10%	0
pw																
pfc																
RCR	RCR:Room Cavity Ratio			Coefficients of Utilization(CU)												
0.0	1.18	1.18	1.18	1.15	1.15	1.15	1.09	1.09	1.09	1.04	1.04	1.04	.99	.99	.99	.97
1.0	1.02	.97	.93	.99	.95	.91	.95	.91	.88	.90	.87	.85	.86	.84	.82	.79
2.0	.88	.81	.75	.86	.80	.74	.82	.77	.72	.78	.74	.70	.75	.71	.68	.65
3.0	.77	.69	.62	.76	.68	.62	.72	.66	.60	.69	.63	.59	.66	.61	.57	.55
4.0	.69	.60	.53	.67	.59	.52	.64	.57	.51	.61	.55	.50	.59	.53	.49	.47
5.0	.61	.52	.45	.60	.51	.45	.57	.50	.44	.55	.48	.43	.53	.47	.43	.40
6.0	.55	.46	.39	.54	.45	.39	.52	.44	.39	.50	.43	.38	.48	.42	.37	.35
7.0	.50	.41	.35	.49	.40	.35	.47	.40	.34	.45	.39	.34	.44	.38	.33	.31
8.0	.45	.37	.31	.45	.36	.31	.43	.36	.30	.42	.35	.30	.40	.34	.30	.28
9.0	.42	.33	.28	.41	.33	.28	.40	.32	.27	.38	.32	.27	.37	.31	.27	.25
10.0	.38	.30	.25	.38	.30	.25	.37	.30	.25	.35	.29	.25	.34	.29	.24	.23



C Range: 0 - 360DEG  
 C Interval: 45.0DEG  
 Test Speed: HIGH  
 Temperature:25.3DEG  
 Operators:  
 Test Date:2024-04-28

γ Range: 0 - 180DEG  
 γ Interval: 1.0DEG  
 Test System:EVERFINE GO-2000A\_V1 SYSTEM V2.00.421  
 Humidity:65.0%  
 Test Distance:11.498m [K=1.0000]  
 Remarks:

WEC AND CCEC

Test:U:240.29V I:0.1835A P:42.074W PF:0.9543 Freq:49.99Hz Lamp Flux:4956.08x1 lm		
NAME: S29691	TYPE:LED NCF	WEIGHT:
SPEC.:42W 4000K	DIM.: 1200x96x79mm	SERIAL No.:
MFR.:	SUR.:1200x96mm	Shielding Angle:

pcc	80%			70%			50%			30%			10%			0
pw	50%	30%	10%	50%	30%	10%	50%	30%	10%	50%	30%	10%	50%	30%	10%	0
pfc	20%			20%			20%			20%			20%			0
RCR	RCR:Room Cavity Ratio						Wall Exitance Coefficients (WEC)									
0.0																
1.0	.332	.189	.060	.324	.185	.059	.309	.177	.057	.295	.170	.055	.282	.164	.053	
2.0	.304	.166	.051	.297	.163	.050	.283	.157	.049	.271	.152	.048	.259	.147	.046	
3.0	.277	.148	.044	.271	.145	.044	.259	.140	.043	.248	.136	.042	.238	.132	.041	
4.0	.254	.132	.039	.248	.130	.038	.238	.126	.038	.228	.122	.037	.219	.119	.036	
5.0	.234	.119	.034	.229	.117	.034	.219	.114	.034	.210	.111	.033	.202	.108	.032	
6.0	.216	.108	.031	.211	.107	.031	.203	.104	.030	.195	.101	.030	.187	.099	.029	
7.0	.200	.099	.028	.196	.098	.028	.189	.095	.027	.182	.093	.027	.175	.091	.027	
8.0	.187	.091	.026	.183	.090	.025	.176	.088	.025	.170	.086	.025	.164	.084	.024	
9.0	.175	.085	.024	.172	.084	.023	.165	.082	.023	.159	.080	.023	.154	.078	.023	
10.0	.164	.079	.022	.161	.078	.022	.156	.076	.021	.150	.075	.021	.145	.073	.021	

pcc	80%			70%			50%			30%			10%			0
pw	50%	30%	10%	50%	30%	10%	50%	30%	10%	50%	30%	10%	50%	30%	10%	0
pfc	20%			20%			20%			20%			20%			0
RCR	RCR:Room Cavity Ratio						Ceiling Cavity Exitance Coefficients (CCEC)									
0.0	.214	.214	.214	.183	.183	.183	.125	.125	.125	.072	.072	.072	.023	.023	.023	
1.0	.205	.179	.156	.176	.154	.134	.120	.106	.093	.069	.061	.054	.022	.020	.017	
2.0	.197	.155	.120	.169	.134	.104	.116	.093	.072	.067	.054	.042	.021	.017	.014	
3.0	.190	.138	.097	.162	.119	.084	.112	.083	.059	.064	.048	.035	.021	.016	.011	
4.0	.182	.125	.081	.156	.108	.071	.107	.075	.050	.062	.044	.029	.020	.014	.010	
5.0	.174	.115	.071	.150	.099	.061	.103	.069	.043	.060	.041	.026	.019	.013	.008	
6.0	.167	.106	.063	.143	.092	.055	.099	.064	.039	.057	.038	.023	.019	.012	.008	
7.0	.160	.099	.057	.138	.086	.050	.095	.060	.035	.055	.036	.021	.018	.012	.007	
8.0	.153	.094	.053	.132	.081	.046	.091	.057	.033	.053	.034	.019	.017	.011	.006	
9.0	.147	.089	.049	.127	.077	.043	.088	.054	.030	.051	.032	.018	.017	.010	.006	
10.0	.142	.084	.046	.122	.073	.041	.085	.052	.029	.049	.031	.017	.016	.010	.006	

C Range: 0 - 360DEG  
 C Interval: 45.0DEG  
 Test Speed: HIGH  
 Temperature:25.3DEG  
 Operators:  
 Test Date:2024-04-28

γ Range: 0 - 180DEG  
 γ Interval: 1.0DEG  
 Test System:EVERFINE GO-2000A\_V1 SYSTEM V2.00.421  
 Humidity:65.0%  
 Test Distance:11.498m [K=1.0000]  
 Remarks:

UGR(Unified Glare Rating) Table

Test:U:240.29V I:0.1835A P:42.074W PF:0.9543 Freq:49.99Hz Lamp Flux:4956.08x1 lm		
NAME: S29691	TYPE:LED NCF	WEIGHT:
SPEC.:42W 4000K	DIM.: 1200x96x79mm	SERIAL No.:
MFR.:	SUR.:1200x96mm	Shielding Angle:

ceiling/cavity	0.7	0.7	0.5	0.5	0.3	0.7	0.7	0.5	0.5	0.3
walls	0.5	0.3	0.5	0.3	0.3	0.5	0.3	0.5	0.3	0.3
working plane	0.2	0.2	0.2	0.2	0.2	0.2	0.2	0.2	0.2	0.2
<b>Room dimensions</b>	<b>Viewed crosswise</b>					<b>Viewed endwise</b>				
<b>x = 2H y = 2H</b>	22.3	23.8	22.6	24.0	24.3	21.5	23.0	21.8	23.3	23.5
3H	24.1	25.5	24.5	25.8	26.1	22.9	24.3	23.3	24.6	24.9
4H	25.0	26.3	25.4	26.6	27.0	23.5	24.8	23.9	25.1	25.5
6H	25.8	27.1	26.2	27.4	27.7	23.9	25.2	24.3	25.5	25.9
8H	26.2	27.4	26.6	27.7	28.1	24.1	25.3	24.4	25.6	26.0
12H	26.5	27.6	26.9	28.0	28.3	24.1	25.3	24.5	25.6	26.0
4H 2H	22.8	24.2	23.2	24.5	24.8	22.3	23.6	22.6	23.9	24.2
3H	24.9	26.1	25.3	26.4	26.8	24.0	25.1	24.4	25.5	25.8
4H	26.0	27.0	26.4	27.4	27.8	24.7	25.8	25.1	26.1	26.5
6H	27.0	27.9	27.4	28.3	28.8	25.3	26.2	25.7	26.6	27.1
8H	27.4	28.3	27.9	28.7	29.2	25.5	26.4	25.9	26.8	27.2
12H	27.8	28.6	28.3	29.1	29.5	25.6	26.4	26.1	26.9	27.3
8H 4H	26.3	27.2	26.8	27.6	28.1	25.2	26.1	25.7	26.6	27.0
6H	27.6	28.3	28.1	28.8	29.3	26.1	26.8	26.6	27.3	27.8
8H	28.1	28.8	28.7	29.3	29.8	26.4	27.1	26.9	27.6	28.1
12H	28.7	29.3	29.2	29.8	30.3	26.7	27.3	27.2	27.8	28.3
12H 4H	26.4	27.2	26.8	27.6	28.1	25.3	26.2	25.8	26.6	27.1
6H	27.7	28.3	28.2	28.8	29.3	26.3	27.0	26.8	27.5	28.0
8H	28.3	28.9	28.9	29.4	30.0	26.8	27.3	27.3	27.8	28.4
<b>Variations with the observer position at spacings:</b>										
S = 1.0H	+ 0.1 / - 0.1					+ 0.2 / - 0.2				
1.5H	+ 0.1 / - 0.2					+ 0.2 / - 0.3				
2.0H	+ 0.1 / - 0.3					+ 0.1 / - 0.4				

CIE Pub.117, 4956 lm Total Lamp Luminous Flux Corrected (8log(F/F0) = 5.6)  
 Area: 0.1 m2

C Range: 0 - 360DEG  
 C Interval: 45.0DEG  
 Test Speed: HIGH  
 Temperature:25.3DEG  
 Operators:  
 Test Date:2024-04-28

γ Range: 0 - 180DEG  
 γ Interval: 1.0DEG  
 Test System:EVERFINE GO-2000A\_V1 SYSTEM V2.00.421  
 Humidity:65.0%  
 Test Distance:11.498m [K=1.0000]  
 Remarks:

UTILIZATION FACTORS TABLE

Test:U:240.29V I:0.1835A P:42.074W PF:0.9543 Freq:49.99Hz Lamp Flux:4956.08x1 lm		
NAME: S29691	TYPE:LED NCF	WEIGHT:
SPEC.:42W 4000K	DIM.: 1200x96x79mm	SERIAL No.:
MFR.:	SUR.:1200x96mm	Shielding Angle:

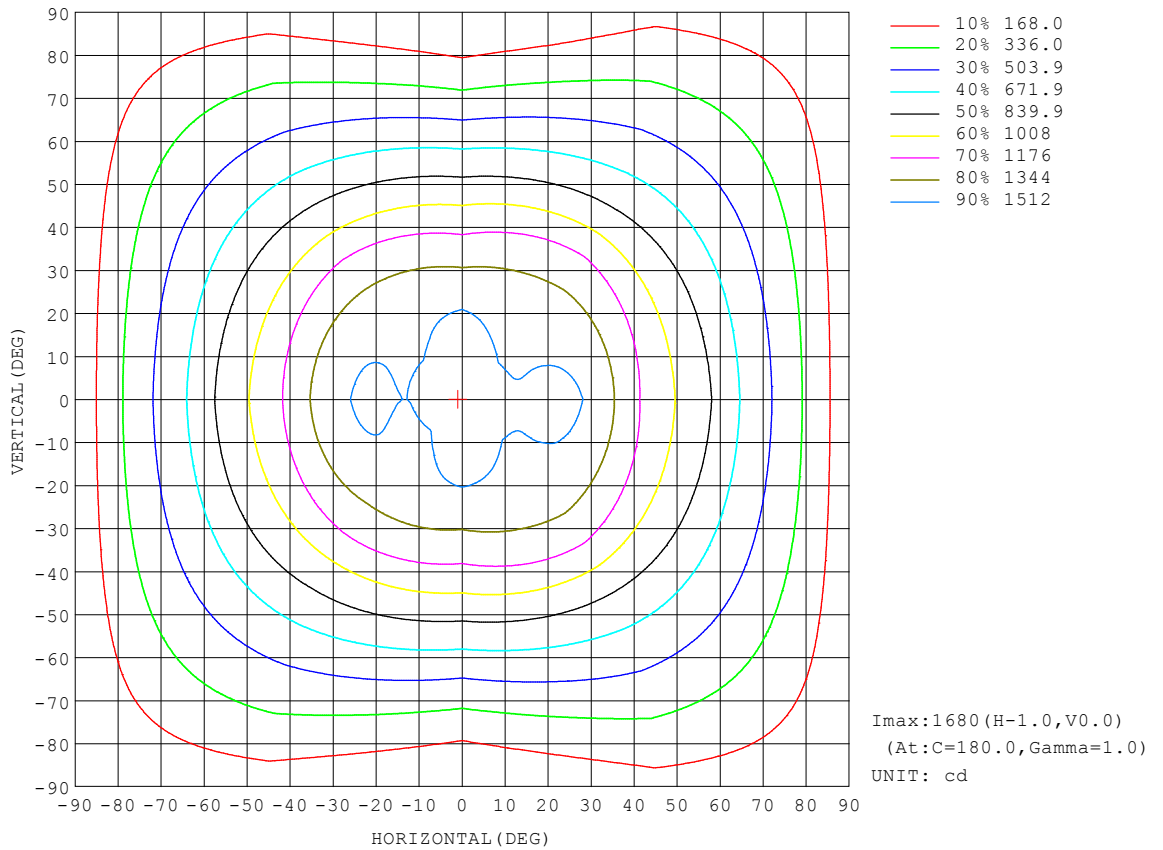
REFLECTANCE										
Ceiling	0.8	0.8	0.8	0.7	0.7	0.7	0.5	0.5	0.5	0
Walls	0.7	0.5	0.3	0.7	0.5	0.3	0.7	0.5	0.3	0
Working plane	0.2	0.2	0.2	0.2	0.2	0.2	0.2	0.2	0.2	0
ROOM INDEX	UTILIZATION FACTORS (PERCENT) $k(RI) \times RCR = 5$									
k = 0.60	56	44	37	55	44	37	54	43	37	30
0.80	66	54	46	65	53	46	63	53	46	39
1.00	74	62	55	73	62	55	70	63	54	47
1.25	81	70	62	79	69	62	76	68	61	53
1.50	86	75	68	84	74	68	81	72	66	58
2.00	93	84	77	91	82	76	87	80	74	66
2.50	97	88	82	94	87	81	90	84	79	70
3.00	100	93	87	98	91	85	93	88	83	74
4.00	104	98	93	102	96	91	97	92	88	78
5.00	107	101	97	104	99	95	99	95	92	82
ROOM INDEX	UF (total)									Direct
According to DIN EN 13032-2 2004			Suspended				SHRNOM = 1.25			

C Range: 0 - 360DEG  
 C Interval: 45.0DEG  
 Test Speed: HIGH  
 Temperature:25.3DEG  
 Operators:  
 Test Date:2024-04-28

$\gamma$  Range: 0 - 180DEG  
 $\gamma$  Interval: 1.0DEG  
 Test System:EVERFINE GO-2000A\_V1 SYSTEM V2.00.421  
 Humidity:65.0%  
 Test Distance:11.498m [K=1.0000]  
 Remarks:

ISOCANDELA DIAGRAM

Test:U:240.29V I:0.1835A P:42.074W PF:0.9543 Freq:49.99Hz Lamp Flux:4956.08x1 lm		
NAME: S29691	TYPE:LED NCF	WEIGHT:
SPEC.:42W 4000K	DIM.: 1200x96x79mm	SERIAL No.:
MFR.:	SUR.:1200x96mm	Shielding Angle:



C Range: 0 - 360DEG  
 C Interval: 45.0DEG  
 Test Speed: HIGH  
 Temperature:25.3DEG  
 Operators:  
 Test Date:2024-04-28

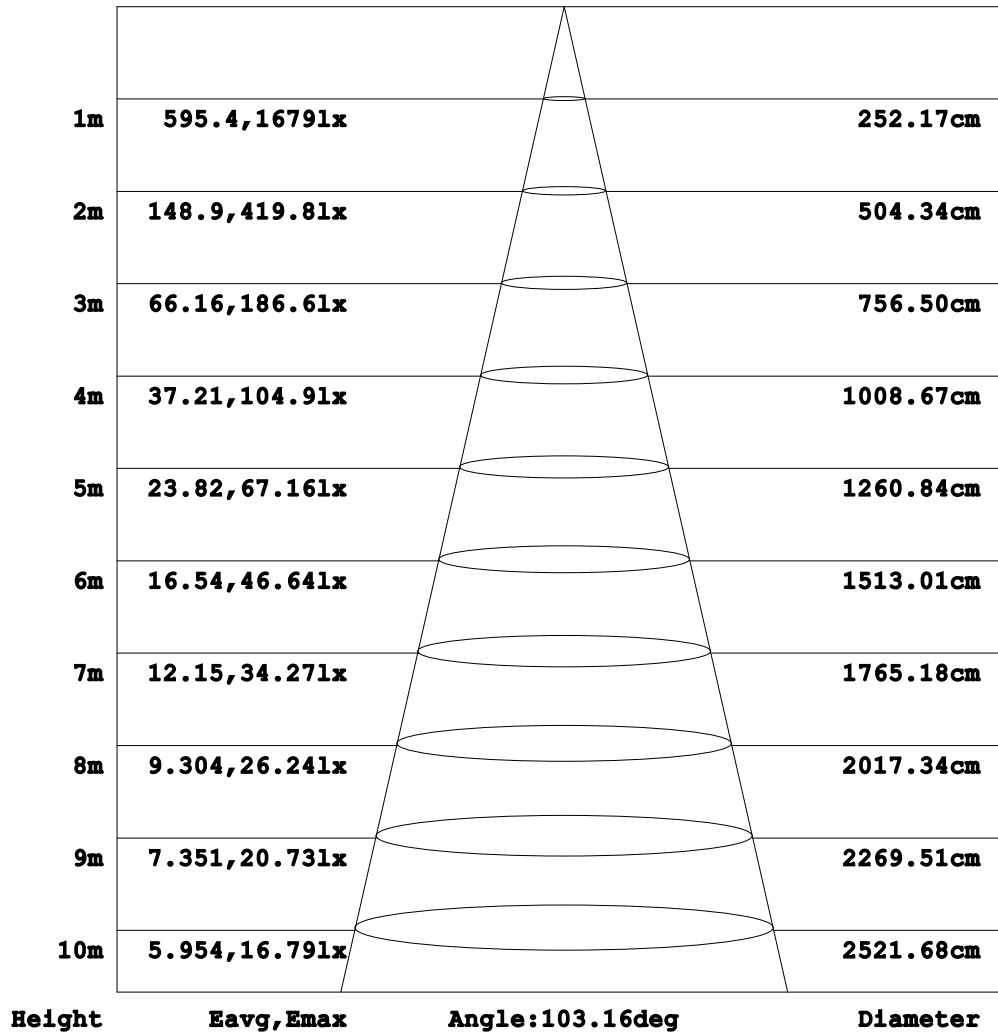
γ Range: 0 - 180DEG  
 γ Interval: 1.0DEG  
 Test System:EVERFINE GO-2000A\_V1 SYSTEM V2.00.421  
 Humidity:65.0%  
 Test Distance:11.498m [K=1.0000]  
 Remarks:



**AAI Figure**

Test:U:240.29V I:0.1835A P:42.074W PF:0.9543 Freq:49.99Hz Lamp Flux:4956.08x1 lm		
NAME: S29691	TYPE:LED NCF	WEIGHT:
SPEC.:42W 4000K	DIM.: 1200x96x79mm	SERIAL No.:
MFR.:	SUR.:1200x96mm	Shielding Angle:

**Flux out:3065 lm**



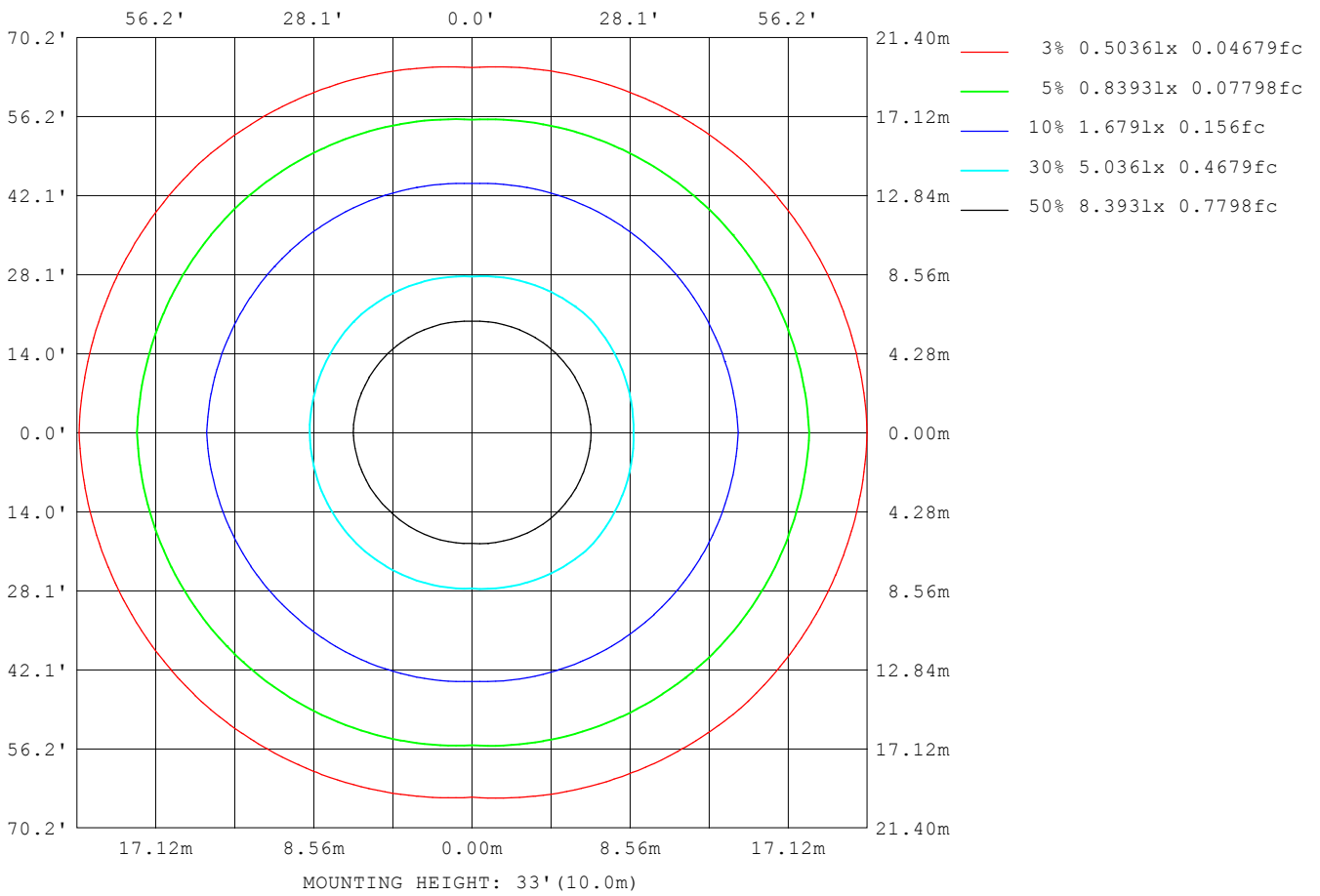
Note: The Curves indicate the illuminated area and the average illumination when the luminaire is at different distance.

C Range: 0 - 360DEG  
 C Interval: 45.0DEG  
 Test Speed: HIGH  
 Temperature: 25.3DEG  
 Operators:  
 Test Date: 2024-04-28

γ Range: 0 - 180DEG  
 γ Interval: 1.0DEG  
 Test System: EVERFINE GO-2000A\_V1 SYSTEM V2.00.421  
 Humidity: 65.0%  
 Test Distance: 11.498m [K=1.0000]  
 Remarks:

**ISOLUX DIAGRAM**

Test:U:240.29V I:0.1835A P:42.074W PF:0.9543 Freq:49.99Hz Lamp Flux:4956.08x1 lm		
NAME: S29691	TYPE:LED NCF	WEIGHT:
SPEC.:42W 4000K	DIM.: 1200x96x79mm	SERIAL No.:
MFR.:	SUR.:1200x96mm	Shielding Angle:



**C Range: 0 - 360DEG**  
**C Interval: 45.0DEG**  
**Test Speed: HIGH**  
**Temperature:25.3DEG**  
**Operators:**  
**Test Date:2024-04-28**

**γ Range: 0 - 180DEG**  
**γ Interval: 1.0DEG**  
**Test System:EVERFINE GO-2000A\_V1 SYSTEM V2.00.421**  
**Humidity:65.0%**  
**Test Distance:11.498m [K=1.0000]**  
**Remarks:**

LED Avg.L Report

Test:U:240.29V I:0.1835A P:42.074W PF:0.9543 Freq:49.99Hz Lamp Flux:4956.08x1 lm		
NAME: S29691	TYPE:LED NCF	WEIGHT:
SPEC.:42W 4000K	DIM.: 1200x96x79mm	SERIAL No.:
MFR.:	SUR.:1200x96mm	Shielding Angle:

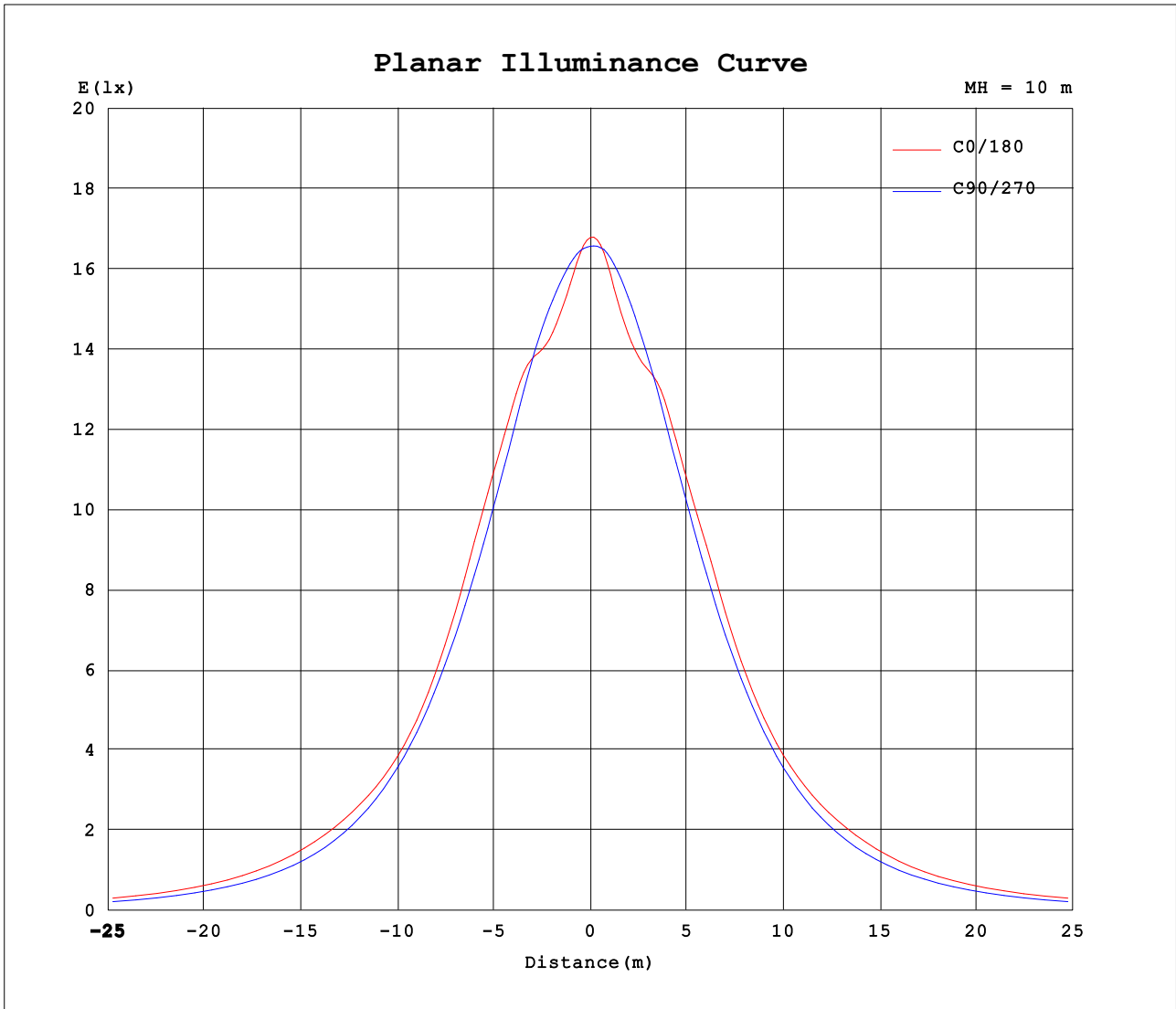
AvgL	cd/m2
L_0~180 (65) av	15513
L_0~180 (75) av	16766
L_0~180 (85) av	20026
L_90~270 (65) av	11827
L_90~270 (75) av	10154
L_90~270 (85) av	7599
L_45 (65) av	14206
L_45 (75) av	15449
L_45 (85) av	22887

Standard: GB/T 29293-2012

C Range: 0 - 360DEG  
 C Interval: 45.0DEG  
 Test Speed: HIGH  
 Temperature:25.3DEG  
 Operators:  
 Test Date:2024-04-28

γ Range: 0 - 180DEG  
 γ Interval: 1.0DEG  
 Test System:EVERFINE GO-2000A\_V1 SYSTEM V2.00.421  
 Humidity:65.0%  
 Test Distance:11.498m [K=1.0000]  
 Remarks:

**Planar Illuminance Curve**



C Range: 0 - 360DEG  
 C Interval: 45.0DEG  
 Test Speed: HIGH  
 Temperature: 25.3DEG  
 Operators:  
 Test Date: 2024-04-28

γ Range: 0 - 180DEG  
 γ Interval: 1.0DEG  
 Test System: EVERFINE GO-2000A\_V1 SYSTEM V2.00.421  
 Humidity: 65.0%  
 Test Distance: 11.498m [K=1.0000]  
 Remarks:

LUMINOUS DISTRIBUTION INTENSITY DATA

Test:U:240.29V I:0.1835A P:42.074W PF:0.9543 Freq:49.99Hz Lamp Flux:4956.08x1 lm		
NAME: S29691	TYPE:LED NCF	WEIGHT:
SPEC.:42W 4000K	DIM.: 1200x96x79mm	SERIAL No.:
MFR.:	SUR.:1200x96mm	Shielding Angle:

Table--1

UNIT: cd

C (DEG) γ (DEG)	0	45	90	135	180	225	270	315											
0	1679	1669	1657	1643	1679	1669	1657	1643											
5	1607	1629	1645	1596	1633	1637	1658	1626											
10	1531	1552	1616	1514	1535	1555	1628	1542											
15	1544	1493	1583	1457	1517	1485	1584	1470											
20	1588	1467	1519	1452	1566	1460	1525	1431											
25	1546	1469	1439	1455	1525	1463	1448	1435											
30	1481	1425	1348	1386	1461	1407	1356	1398											
35	1356	1346	1248	1296	1354	1319	1250	1332											
40	1212	1248	1131	1190	1220	1219	1135	1243											
45	1086	1110	1007	1055	1098	1084	1009	1108											
50	1001	962	880	932	1000	952	881	958											
55	911	830	749	811	903	828	753	822											
60	789	712	623	698	774	709	625	705											
65	662	610	499	591	649	598	501	602											
70	549	510	379	485	544	493	380	503											
75	435	408	262	390	433	395	264	406											
80	313	310	154	291	306	300	156	299											
85	180	206	65.7	184	169	196	66.8	212											
90	94.3	118	21.9	104	89.2	112	23.1	130											
95	56.9	68.5	17.4	64.0	56.8	67.0	19.9	76.2											
100	42.8	45.6	10.4	45.5	44.9	45.7	15.5	50.5											
105	36.3	33.7	7.56	35.3	38.1	34.8	9.05	37.8											
110	32.1	26.5	7.30	28.5	32.8	27.8	8.57	30.1											
115	28.4	20.9	7.29	22.9	28.8	22.5	8.31	24.4											
120	24.5	15.9	7.44	18.0	25.1	17.9	8.13	19.2											
125	20.7	11.9	7.70	14.1	21.5	14.0	8.03	14.4											
130	17.0	9.92	8.08	12.1	17.7	12.1	8.10	11.3											
135	13.7	9.86	8.51	11.2	14.4	11.2	8.39	10.4											
140	11.6	10.1	9.16	10.7	12.7	10.6	8.86	10.1											
145	11.4	10.3	9.71	10.7	11.8	10.5	9.34	10.0											
150	11.5	10.7	10.2	10.9	11.0	10.7	9.85	10.1											
155	11.6	11.0	10.7	11.1	11.1	11.0	10.4	10.4											
160	11.7	11.3	11.0	11.3	11.3	11.3	10.8	10.7											
165	11.8	11.5	11.3	11.6	11.6	11.6	11.3	11.0											
170	12.0	11.8	11.7	11.8	12.0	11.9	11.6	11.3											
175	12.3	12.1	11.9	11.9	12.3	12.1	11.9	11.6											
180	12.3	12.3	12.0	11.9	12.4	12.2	12.0	11.8											

C Range: 0 - 360DEG  
 C Interval: 45.0DEG  
 Test Speed: HIGH  
 Temperature:25.3DEG  
 Operators:  
 Test Date:2024-04-28

γ Range: 0 - 180DEG  
 γ Interval: 1.0DEG  
 Test System:EVERFINE GO-2000A\_V1 SYSTEM V2.00.421  
 Humidity:65.0%  
 Test Distance:11.498m [K=1.0000]  
 Remarks: