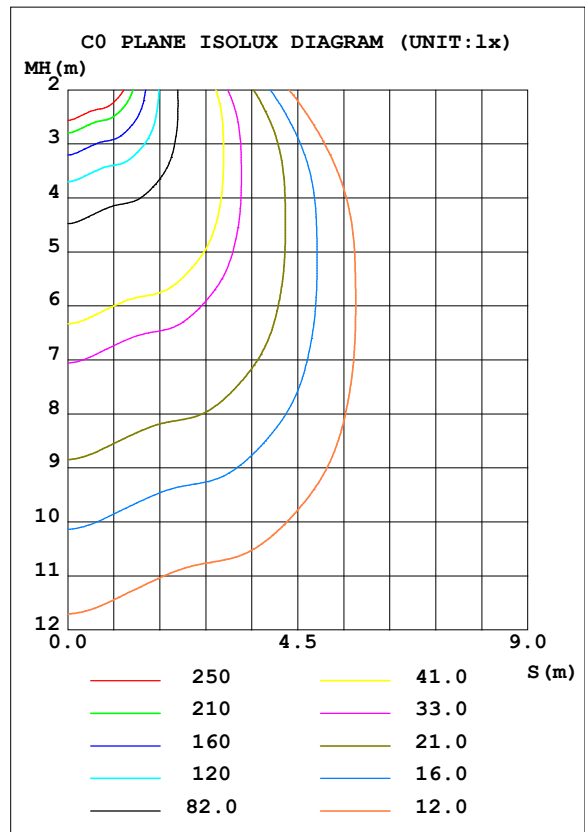
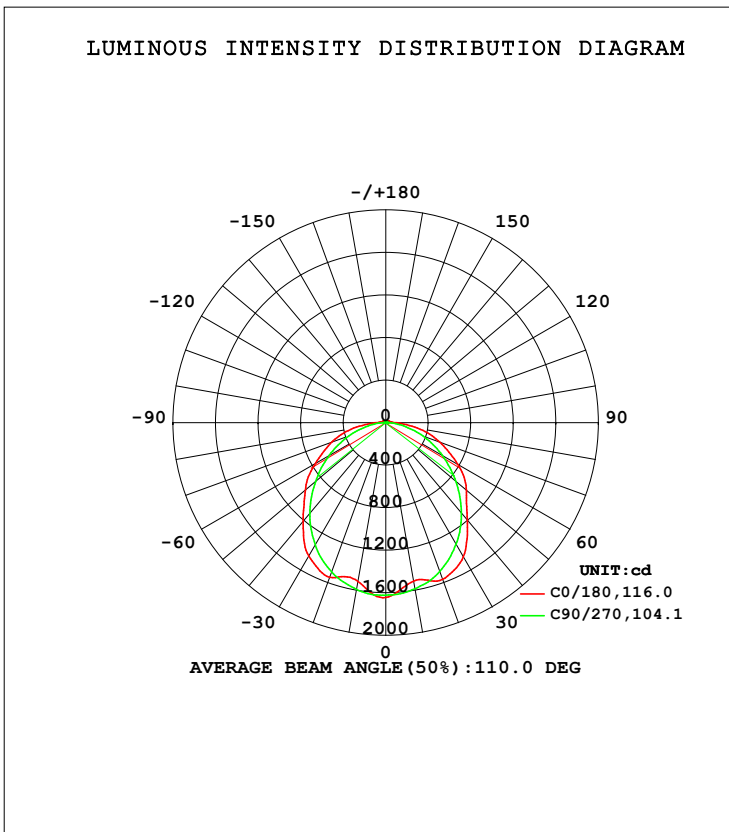


LUMINAIRE PHOTOMETRIC TEST REPORT

Test:U:240.28V I:0.1662A P:38.697W PF:0.9688 Freq:49.98Hz Lamp Flux:4891.63x1 lm		
NAME: S29690	TYPE:LED NCF	WEIGHT:
SPEC.:40W 4000K	DIM.: 1200x96x79mm	SERIAL No.:
MFR.:	SUR.:1200x96mm	Shielding Angle:

DATA OF LAMP		PHOTOMETRIC DATA Eff: 126.41 lm/W			
MODEL	S29690	I _{max} (cd)	1645	S/MH (C0/180)	1.30
NOMINAL POWER (W)	38.6972	LOR (%)	100.0	S/MH (C90/270)	1.22
RATED VOLTAGE (V)	240	TOTAL FLUX (lm)	4891.6	η UP, DN (C0-180)	1.5, 48.5
NOMINAL FLUX (lm)	4891.63	CIE CLASS	DIRECT	η UP, DN (C180-360)	1.6, 48.3
LAMPS INSIDE	1	η up (%)	3.1	CIBSE SHR NOM	1.25
TEST VOLTAGE (V)	240.284	η down (%)	96.9	CIBSE SHR MAX	1.35



C Range: 0 - 360DEG
 C Interval: 45.0DEG
 Test Speed: HIGH
 Temperature: 25.3DEG
 Operators:
 Test Date: 2024-04-28

γ Range: 0 - 180DEG
 γ Interval: 1.0DEG
 Test System: EVERFINE GO-2000A_V1 SYSTEM V2.00.421
 Humidity: 65.0%
 Test Distance: 11.498m [K=1.0000]
 Remarks:

ZONAL FLUX DIAGRAM

ZONAL FLUX DIAGRAM:

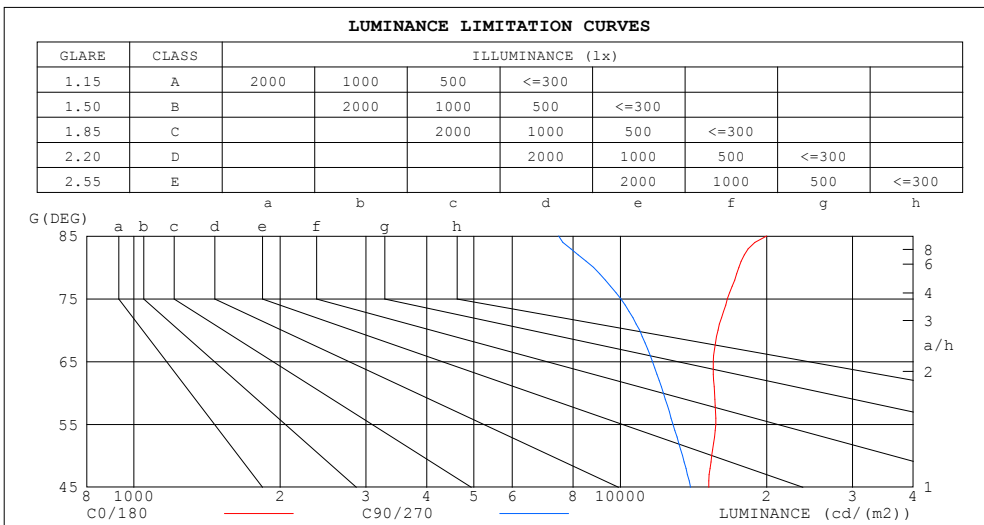
γ	C0	C45	C90	C135	C180	C225	C270	C315	γ	☉ zone	☉ total	lum, lamp
10	1514	1527	1585	1490	1516	1515	1591	1498	0- 10	149.9	149.9	3.06,3.06
20	1567	1456	1488	1425	1548	1407	1492	1417	10- 20	422.9	572.8	11.7,11.7
30	1458	1409	1321	1375	1449	1360	1327	1382	20- 30	666.3	1239	25.3,25.3
40	1195	1230	1107	1185	1211	1186	1112	1218	30- 40	807.2	2046	41.8,41.8
50	991.3	949.3	862.9	930.3	988.4	933.9	863.5	939.9	40- 50	813.9	2860	58.5,58.5
60	780.7	705.8	613.1	696.5	762.5	701.1	613.1	697.6	50- 60	728.9	3589	73.4,73.4
70	543.7	506.8	374.7	485.5	542.5	488.8	372.6	498.9	60- 70	578.8	4168	85.2,85.2
80	304.6	304.6	153.0	294.5	309.5	300.5	153.7	299.2	70- 80	391.9	4560	93.2,93.2
90	94.30	117.9	21.76	106.4	91.87	114.6	22.79	123.9	80- 90	178.5	4738	96.9,96.9
100	44.26	47.39	10.59	46.30	46.14	48.05	14.00	50.09	90-100	62.32	4801	98.1,98.1
110	33.26	27.52	7.563	29.10	33.63	29.74	7.596	29.61	100-110	32.07	4833	98.8,98.8
120	25.78	16.83	7.521	18.77	25.97	19.48	7.304	18.76	110-120	20.93	4854	99.2,99.2
130	18.14	10.67	8.196	12.57	18.47	13.24	7.730	10.97	120-130	13.24	4867	99.5,99.5
140	12.72	9.948	9.203	10.76	13.12	10.86	8.757	9.564	130-140	8.838	4876	99.7,99.7
150	11.47	10.45	10.23	10.81	11.09	10.46	9.833	9.863	140-150	6.616	4882	99.8,99.8
160	11.59	11.06	11.01	11.22	11.38	10.93	10.81	10.52	150-160	4.980	4887	99.9,99.9
170	11.93	11.65	11.66	11.67	12.10	11.56	11.54	11.21	160-170	3.211	4890	100,100
180	12.27	12.14	11.86	11.86	12.40	12.02	11.94	11.80	170-180	1.129	4892	100,100
DEG	LUMINOUS INTENSITY:cd									UNIT:lm		

C Range: 0 - 360DEG
 C Interval: 45.0DEG
 Test Speed: HIGH
 Temperature:25.3DEG
 Operators:
 Test Date:2024-04-28

γ Range: 0 - 180DEG
 γ Interval: 1.0DEG
 Test System:EVERFINE GO-2000A_V1 SYSTEM V2.00.421
 Humidity:65.0%
 Test Distance:11.498m [K=1.0000]
 Remarks:

LUMINANCE LIMITATION CURVES

Test:U:240.28V I:0.1662A P:38.697W PF:0.9688 Freq:49.98Hz Lamp Flux:4891.63x1 lm		
NAME: S29690	TYPE:LED NCF	WEIGHT:
SPEC.:40W 4000K	DIM.: 1200x96x79mm	SERIAL No.:
MFR.:	SUR.:1200x96mm	Shielding Angle:



LUMINANCE cd/(m2)		
G (DEG)	C0/180	C90/270
85	20012	7468
80	17540	8811
75	16590	10030
70	15898	10955
65	15524	11649
60	15613	12263
55	15709	12832
50	15422	13425
45	15213	13950

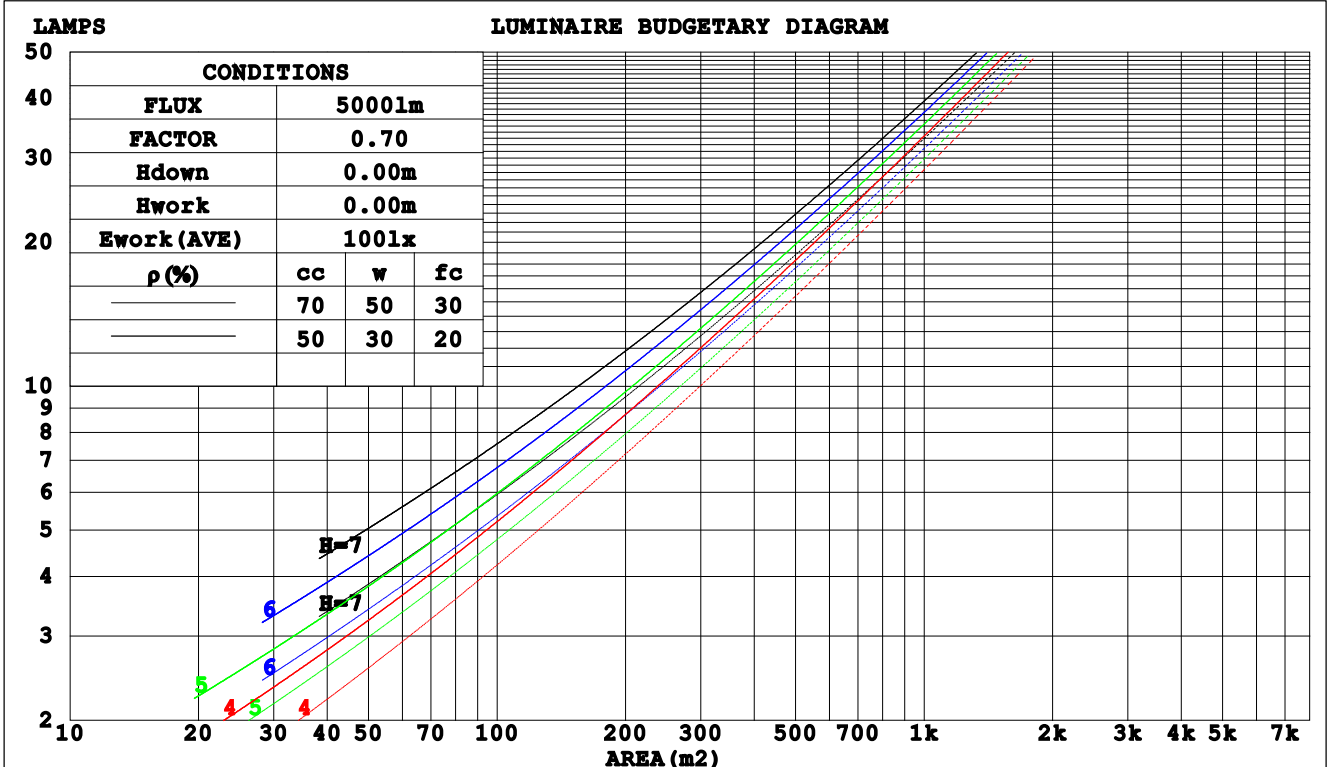
C Range: 0 - 360DEG
C Interval: 45.0DEG
Test Speed: HIGH
Temperature:25.3DEG
Operators:
Test Date:2024-04-28

γ Range: 0 - 180DEG
γ Interval: 1.0DEG
Test System:EVERFINE GO-2000A_V1 SYSTEM V2.00.421
Humidity:65.0%
Test Distance:11.498m [K=1.0000]
Remarks:

CU AND LUMINAIRE BUDGETARY ESTIMATE DIAGRAM

Test:U:240.28V I:0.1662A P:38.697W PF:0.9688 Freq:49.98Hz Lamp Flux:4891.63x1 lm		
NAME: S29690	TYPE:LED NCF	WEIGHT:
SPEC.:40W 4000K	DIM.: 1200x96x79mm	SERIAL No.:
MFR.:	SUR.:1200x96mm	Shielding Angle:

pcc	80%			70%			50%			30%			10%			0
	50%	30%	10%	50%	30%	10%	50%	30%	10%	50%	30%	10%	50%	30%	10%	0
pw																
pfc																
RCR	RCR:Room Cavity Ratio			Coefficients of Utilization(CU)												
0.0	1.18	1.18	1.18	1.15	1.15	1.15	1.09	1.09	1.09	1.04	1.04	1.04	.99	.99	.99	.97
1.0	1.02	.97	.93	.99	.95	.91	.94	.91	.88	.90	.87	.85	.86	.84	.82	.79
2.0	.88	.81	.75	.86	.80	.74	.82	.77	.72	.78	.74	.70	.75	.71	.68	.65
3.0	.77	.69	.62	.76	.68	.61	.72	.65	.60	.69	.63	.58	.66	.61	.57	.55
4.0	.68	.59	.53	.67	.59	.52	.64	.57	.51	.61	.55	.50	.59	.53	.49	.47
5.0	.61	.52	.45	.60	.51	.45	.57	.50	.44	.55	.48	.43	.53	.47	.42	.40
6.0	.55	.46	.39	.54	.45	.39	.52	.44	.38	.50	.43	.38	.48	.42	.37	.35
7.0	.50	.41	.35	.49	.40	.34	.47	.39	.34	.45	.39	.33	.44	.38	.33	.31
8.0	.45	.37	.31	.45	.36	.31	.43	.36	.30	.41	.35	.30	.40	.34	.30	.28
9.0	.42	.33	.28	.41	.33	.28	.40	.32	.27	.38	.32	.27	.37	.31	.27	.25
10.0	.38	.30	.25	.38	.30	.25	.37	.30	.25	.35	.29	.24	.34	.28	.24	.22



C Range: 0 - 360DEG
 C Interval: 45.0DEG
 Test Speed: HIGH
 Temperature:25.3DEG
 Operators:
 Test Date:2024-04-28

γ Range: 0 - 180DEG
 γ Interval: 1.0DEG
 Test System:EVERFINE GO-2000A_V1 SYSTEM V2.00.421
 Humidity:65.0%
 Test Distance:11.498m [K=1.0000]
 Remarks:

WEC AND CCEC

Test:U:240.28V I:0.1662A P:38.697W PF:0.9688 Freq:49.98Hz Lamp Flux:4891.63x1 lm		
NAME: S29690	TYPE:LED NCF	WEIGHT:
SPEC.:40W 4000K	DIM.: 1200x96x79mm	SERIAL No.:
MFR.:	SUR.:1200x96mm	Shielding Angle:

ρcc	80%			70%			50%			30%			10%			0
ρw	50%	30%	10%	50%	30%	10%	50%	30%	10%	50%	30%	10%	50%	30%	10%	0
ρfc	20%			20%			20%			20%			20%			0
RCR	RCR:Room Cavity Ratio						Wall Exitance Coefficients (WEC)									
0.0																
1.0	.333	.189	.060	.325	.185	.059	.309	.178	.057	.295	.170	.055	.283	.164	.053	
2.0	.304	.167	.051	.297	.164	.050	.283	.158	.049	.271	.152	.048	.260	.147	.046	
3.0	.278	.148	.044	.271	.145	.044	.259	.141	.043	.248	.136	.042	.238	.132	.041	
4.0	.254	.132	.039	.248	.130	.038	.238	.126	.038	.228	.122	.037	.219	.119	.036	
5.0	.234	.119	.035	.229	.117	.034	.219	.114	.034	.210	.111	.033	.202	.108	.032	
6.0	.216	.108	.031	.211	.107	.031	.203	.104	.030	.195	.101	.030	.187	.099	.029	
7.0	.201	.099	.028	.196	.098	.028	.189	.095	.027	.182	.093	.027	.175	.091	.027	
8.0	.187	.091	.026	.183	.090	.026	.176	.088	.025	.170	.086	.025	.164	.084	.024	
9.0	.175	.085	.024	.172	.084	.023	.165	.082	.023	.159	.080	.023	.154	.078	.023	
10.0	.164	.079	.022	.161	.078	.022	.156	.076	.021	.150	.075	.021	.145	.073	.021	

ρcc	80%			70%			50%			30%			10%			0
ρw	50%	30%	10%	50%	30%	10%	50%	30%	10%	50%	30%	10%	50%	30%	10%	0
ρfc	20%			20%			20%			20%			20%			0
RCR	RCR:Room Cavity Ratio						Ceiling Cavity Exitance Coefficients (CCEC)									
0.0	.214	.214	.214	.183	.183	.183	.125	.125	.125	.072	.072	.072	.023	.023	.023	
1.0	.206	.180	.157	.176	.154	.135	.121	.106	.093	.069	.062	.054	.022	.020	.018	
2.0	.198	.156	.121	.170	.134	.104	.116	.093	.073	.067	.054	.043	.022	.017	.014	
3.0	.190	.139	.098	.163	.120	.085	.112	.083	.059	.065	.049	.035	.021	.016	.011	
4.0	.183	.126	.082	.157	.109	.071	.108	.076	.050	.062	.044	.030	.020	.014	.010	
5.0	.175	.115	.071	.150	.100	.062	.104	.070	.044	.060	.041	.026	.019	.013	.009	
6.0	.168	.107	.063	.144	.093	.055	.099	.065	.039	.058	.038	.023	.019	.012	.008	
7.0	.161	.100	.058	.138	.087	.050	.096	.061	.036	.056	.036	.021	.018	.012	.007	
8.0	.154	.094	.053	.133	.082	.046	.092	.057	.033	.053	.034	.020	.017	.011	.007	
9.0	.148	.089	.050	.128	.078	.044	.088	.055	.031	.051	.032	.018	.017	.011	.006	
10.0	.142	.085	.047	.123	.074	.041	.085	.052	.029	.050	.031	.017	.016	.010	.006	

C Range: 0 - 360DEG
 C Interval: 45.0DEG
 Test Speed: HIGH
 Temperature:25.3DEG
 Operators:
 Test Date:2024-04-28

γ Range: 0 - 180DEG
 γ Interval: 1.0DEG
 Test System:EVERFINE GO-2000A_V1 SYSTEM V2.00.421
 Humidity:65.0%
 Test Distance:11.498m [K=1.0000]
 Remarks:

UGR(Unified Glare Rating) Table

Test:U:240.28V I:0.1662A P:38.697W PF:0.9688 Freq:49.98Hz Lamp Flux:4891.63x1 lm		
NAME: S29690	TYPE:LED NCF	WEIGHT:
SPEC.:40W 4000K	DIM.: 1200x96x79mm	SERIAL No.:
MFR.:	SUR.:1200x96mm	Shielding Angle:

ceiling/cavity	0.7	0.7	0.5	0.5	0.3	0.7	0.7	0.5	0.5	0.3
walls	0.5	0.3	0.5	0.3	0.3	0.5	0.3	0.5	0.3	0.3
working plane	0.2	0.2	0.2	0.2	0.2	0.2	0.2	0.2	0.2	0.2
Room dimensions	Viewed crosswise					Viewed endwise				
x = 2H y = 2H	22.2	23.7	22.6	24.0	24.3	21.4	22.9	21.8	23.2	23.5
3H	24.1	25.5	24.4	25.8	26.1	22.9	24.3	23.2	24.6	24.9
4H	25.0	26.3	25.3	26.6	26.9	23.5	24.8	23.8	25.1	25.4
6H	25.8	27.0	26.2	27.4	27.7	23.9	25.1	24.3	25.5	25.8
8H	26.1	27.3	26.5	27.7	28.0	24.0	25.2	24.4	25.6	25.9
12H	26.4	27.6	26.8	27.9	28.3	24.1	25.2	24.5	25.6	26.0
4H 2H	22.8	24.1	23.2	24.4	24.8	22.2	23.5	22.6	23.8	24.2
3H	24.9	26.1	25.3	26.4	26.8	23.9	25.1	24.3	25.4	25.8
4H	26.0	27.0	26.4	27.4	27.8	24.7	25.7	25.1	26.1	26.5
6H	26.9	27.9	27.4	28.3	28.7	25.3	26.2	25.7	26.6	27.0
8H	27.4	28.2	27.8	28.7	29.1	25.5	26.3	25.9	26.8	27.2
12H	27.7	28.5	28.2	29.0	29.5	25.6	26.4	26.1	26.8	27.3
8H 4H	26.3	27.2	26.8	27.6	28.1	25.2	26.1	25.7	26.5	27.0
6H	27.5	28.3	28.0	28.7	29.2	26.1	26.8	26.6	27.3	27.8
8H	28.1	28.7	28.6	29.2	29.7	26.4	27.1	26.9	27.5	28.1
12H	28.6	29.2	29.1	29.7	30.2	26.7	27.2	27.2	27.7	28.3
12H 4H	26.3	27.1	26.8	27.6	28.1	25.3	26.1	25.8	26.6	27.1
6H	27.6	28.3	28.1	28.8	29.3	26.3	26.9	26.8	27.4	27.9
8H	28.3	28.8	28.8	29.3	29.9	26.7	27.3	27.3	27.8	28.3
Variations with the observer position at spacings:										
S = 1.0H	+ 0.1 / - 0.1					+ 0.2 / - 0.2				
1.5H	+ 0.1 / - 0.2					+ 0.2 / - 0.3				
2.0H	+ 0.1 / - 0.3					+ 0.1 / - 0.4				

CIE Pub.117, 4892 lm Total Lamp Luminous Flux Corrected (8log(F/F0) = 5.5)
 Area: 0.1 m2

C Range: 0 - 360DEG
 C Interval: 45.0DEG
 Test Speed: HIGH
 Temperature:25.3DEG
 Operators:
 Test Date:2024-04-28

γ Range: 0 - 180DEG
 γ Interval: 1.0DEG
 Test System:EVERFINE GO-2000A_V1 SYSTEM V2.00.421
 Humidity:65.0%
 Test Distance:11.498m [K=1.0000]
 Remarks:

UTILIZATION FACTORS TABLE

Test:U:240.28V I:0.1662A P:38.697W PF:0.9688 Freq:49.98Hz Lamp Flux:4891.63x1 lm		
NAME: S29690	TYPE:LED NCF	WEIGHT:
SPEC.:40W 4000K	DIM.: 1200x96x79mm	SERIAL No.:
MFR.:	SUR.:1200x96mm	Shielding Angle:

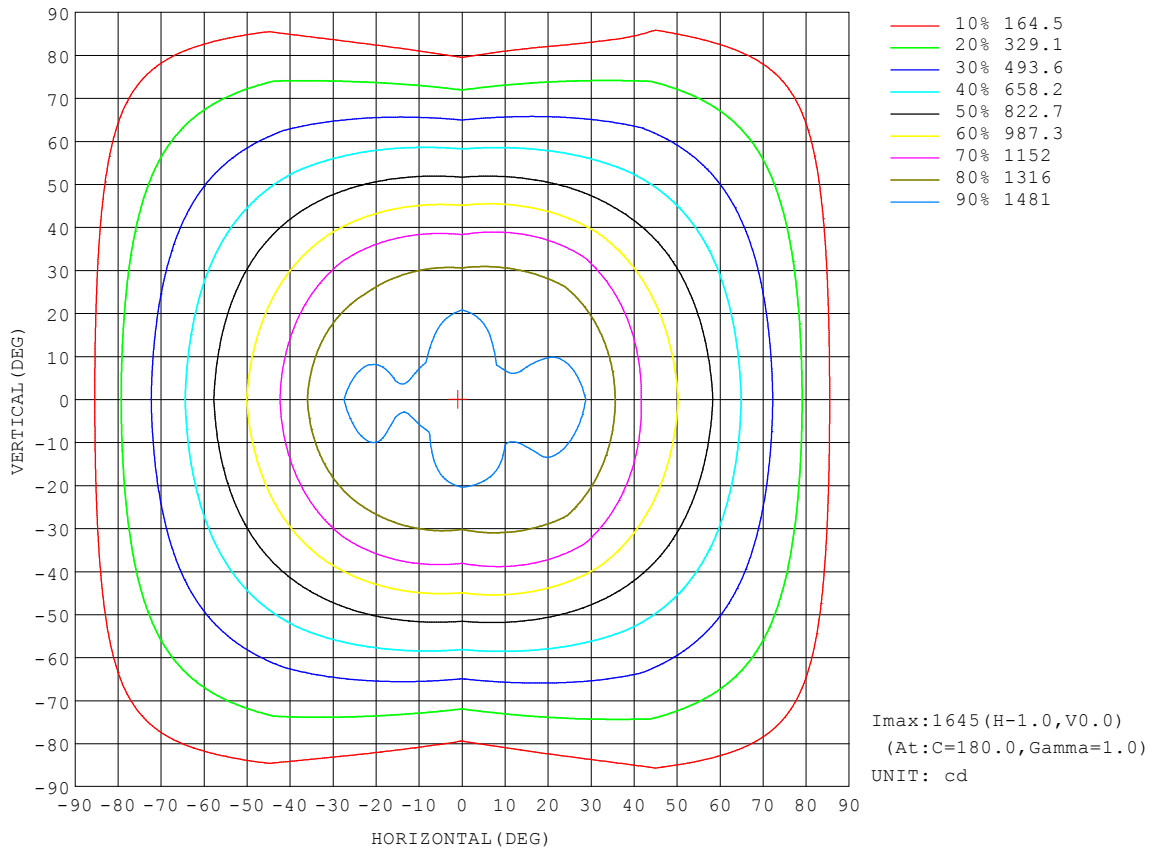
REFLECTANCE										
Ceiling	0.8	0.8	0.8	0.7	0.7	0.7	0.5	0.5	0.5	0
Walls	0.7	0.5	0.3	0.7	0.5	0.3	0.7	0.5	0.3	0
Working plane	0.2	0.2	0.2	0.2	0.2	0.2	0.2	0.2	0.2	0
ROOM INDEX	UTILIZATION FACTORS (PERCENT) $k(RI) \times RCR = 5$									
k = 0.60	56	44	37	55	44	37	54	43	37	30
0.80	66	54	46	65	53	46	63	52	46	39
1.00	74	62	55	72	62	54	70	63	54	46
1.25	81	70	62	79	69	62	76	67	61	53
1.50	86	75	68	84	74	67	81	72	66	58
2.00	93	83	77	91	82	76	87	80	74	65
2.50	97	88	82	94	87	81	90	84	79	70
3.00	100	93	87	98	91	85	93	88	83	74
4.00	104	98	93	102	96	91	97	92	88	78
5.00	107	101	97	104	99	95	99	95	92	81
ROOM INDEX	UF (total)									Direct
According to DIN EN 13032-2 2004			Suspended				SHRNOM = 1.25			

C Range: 0 - 360DEG
 C Interval: 45.0DEG
 Test Speed: HIGH
 Temperature:25.3DEG
 Operators:
 Test Date:2024-04-28

γ Range: 0 - 180DEG
 γ Interval: 1.0DEG
 Test System:EVERFINE GO-2000A_V1 SYSTEM V2.00.421
 Humidity:65.0%
 Test Distance:11.498m [K=1.0000]
 Remarks:

ISOCANDELA DIAGRAM

Test:U:240.28V I:0.1662A P:38.697W PF:0.9688 Freq:49.98Hz Lamp Flux:4891.63x1 lm		
NAME: S29690	TYPE:LED NCF	WEIGHT:
SPEC.:40W 4000K	DIM.: 1200x96x79mm	SERIAL No.:
MFR.:	SUR.:1200x96mm	Shielding Angle:



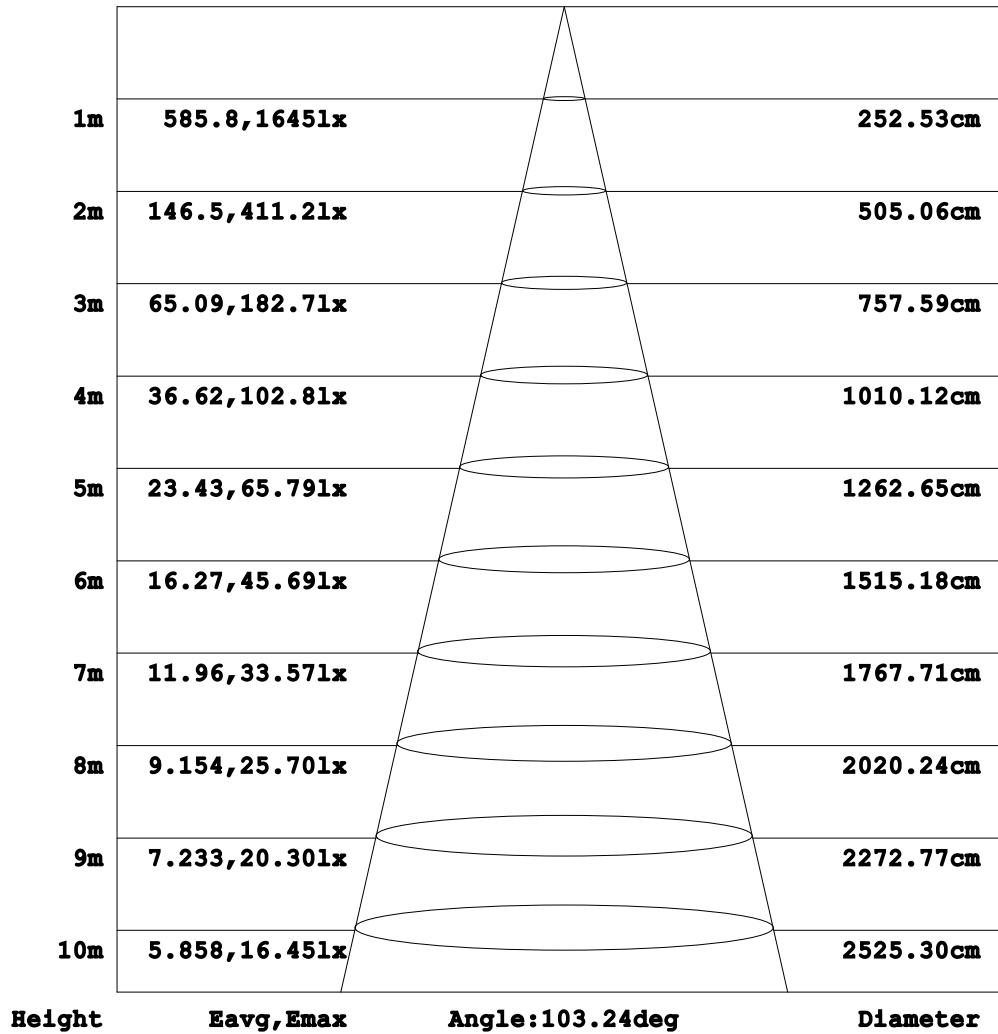
C Range: 0 - 360DEG
 C Interval: 45.0DEG
 Test Speed: HIGH
 Temperature:25.3DEG
 Operators:
 Test Date:2024-04-28

γ Range: 0 - 180DEG
 γ Interval: 1.0DEG
 Test System:EVERFINE GO-2000A_V1 SYSTEM V2.00.421
 Humidity:65.0%
 Test Distance:11.498m [K=1.0000]
 Remarks:

AAI Figure

Test:U:240.28V I:0.1662A P:38.697W PF:0.9688 Freq:49.98Hz Lamp Flux:4891.63x1 lm		
NAME: S29690	TYPE:LED NCF	WEIGHT:
SPEC.:40W 4000K	DIM.: 1200x96x79mm	SERIAL No.:
MFR.:	SUR.:1200x96mm	Shielding Angle:

Flux out:3015 lm



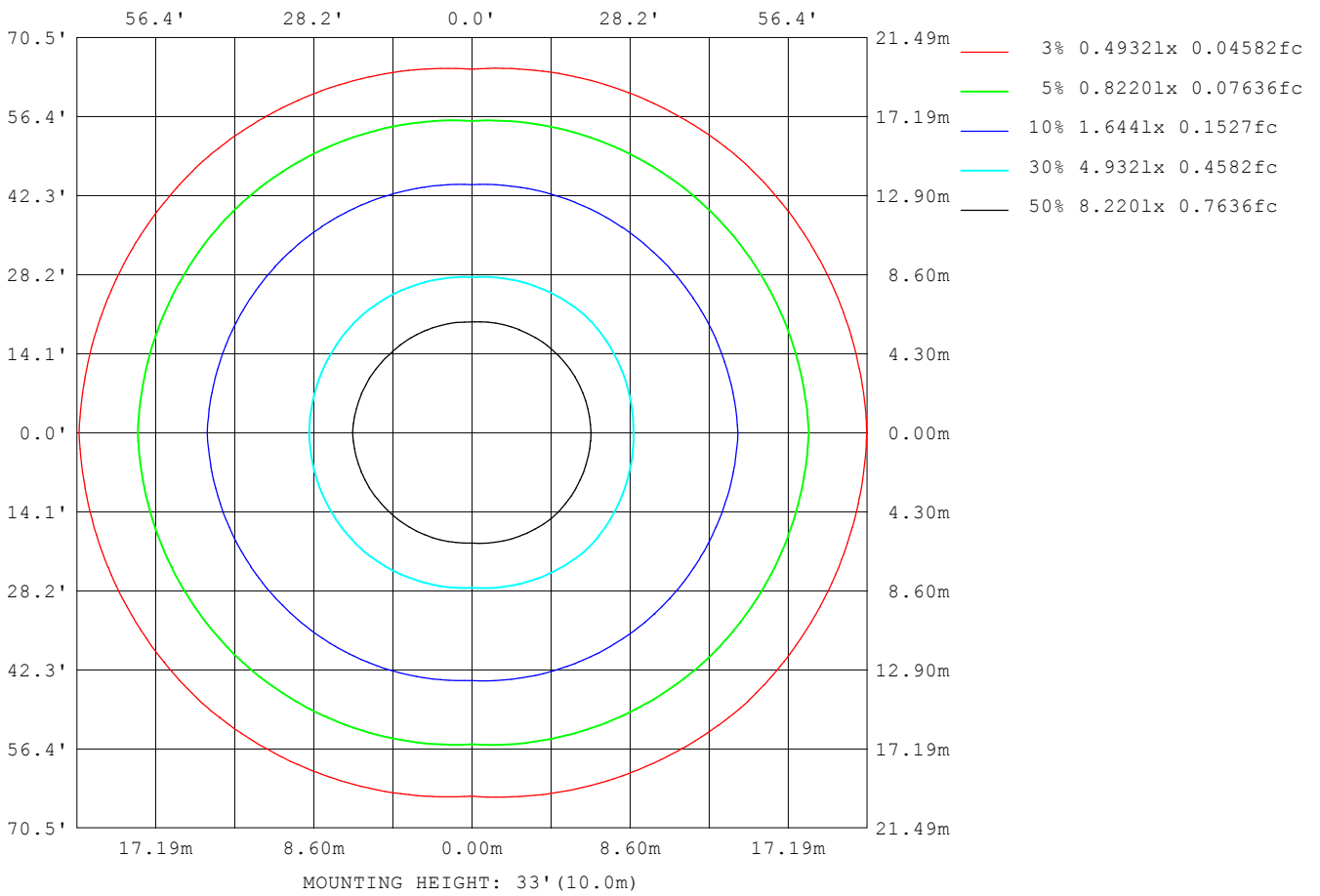
Note:The Curves indicate the illuminated area and the average illumination when the luminaire is at different distance.

C Range: 0 - 360DEG
 C Interval: 45.0DEG
 Test Speed: HIGH
 Temperature:25.3DEG
 Operators:
 Test Date:2024-04-28

γ Range: 0 - 180DEG
 γ Interval: 1.0DEG
 Test System:EVERFINE GO-2000A_V1 SYSTEM V2.00.421
 Humidity:65.0%
 Test Distance:11.498m [K=1.0000]
 Remarks:

ISOLUX DIAGRAM

Test:U:240.28V I:0.1662A P:38.697W PF:0.9688 Freq:49.98Hz Lamp Flux:4891.63x1 lm		
NAME: S29690	TYPE:LED NCF	WEIGHT:
SPEC.:40W 4000K	DIM.: 1200x96x79mm	SERIAL No.:
MFR.:	SUR.:1200x96mm	Shielding Angle:



C Range: 0 - 360DEG
C Interval: 45.0DEG
Test Speed: HIGH
Temperature:25.3DEG
Operators:
Test Date:2024-04-28

γ Range: 0 - 180DEG
γ Interval: 1.0DEG
Test System:EVERFINE GO-2000A_V1 SYSTEM V2.00.421
Humidity:65.0%
Test Distance:11.498m [K=1.0000]
Remarks:

LED Avg.L Report

Test:U:240.28V I:0.1662A P:38.697W PF:0.9688 Freq:49.98Hz Lamp Flux:4891.63x1 lm		
NAME: S29690	TYPE:LED NCF	WEIGHT:
SPEC.:40W 4000K	DIM.: 1200x96x79mm	SERIAL No.:
MFR.:	SUR.:1200x96mm	Shielding Angle:

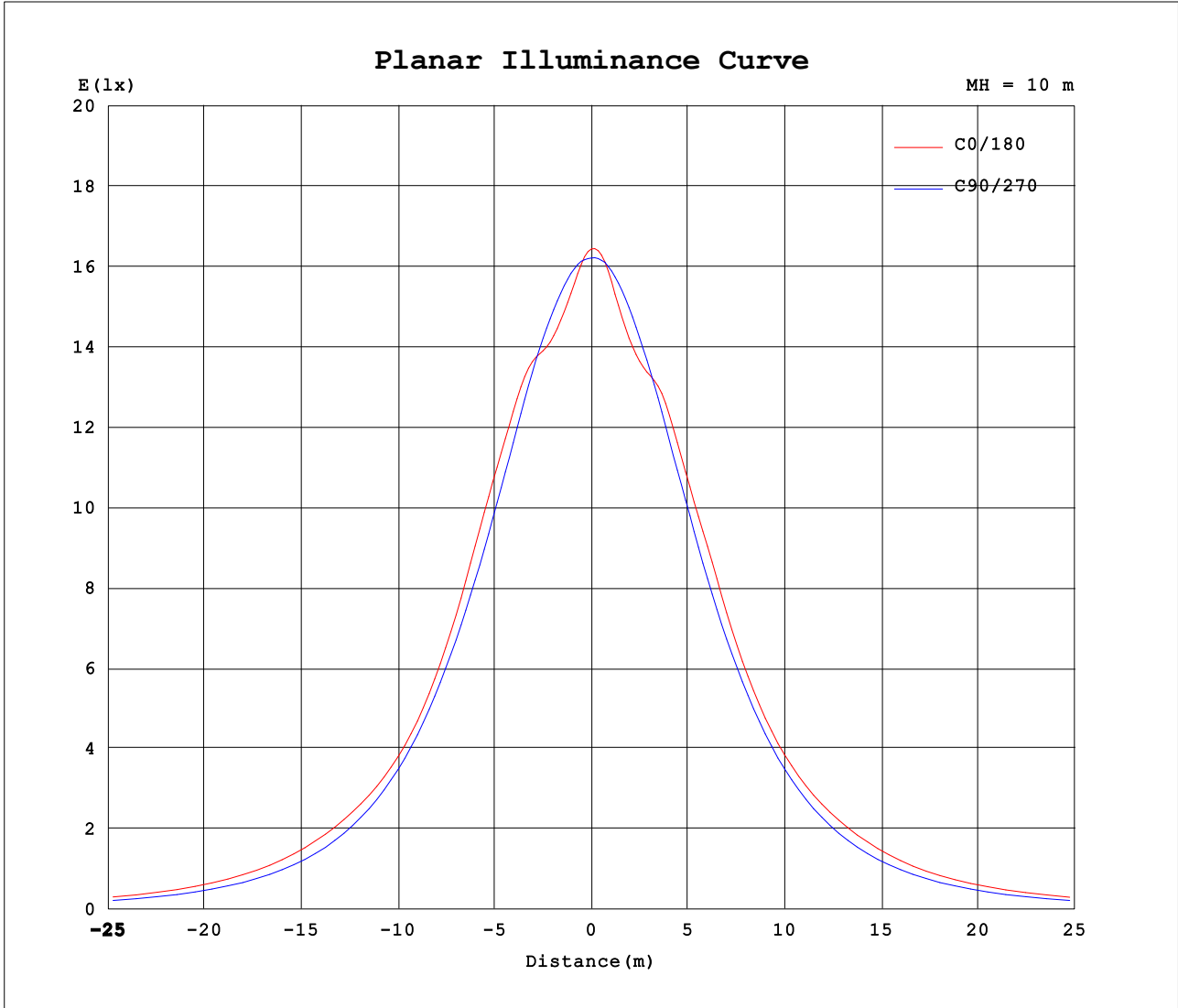
AvgL	cd/m2
L_0~180 (65) av	15389
L_0~180 (75) av	16658
L_0~180 (85) av	19934
L_90~270 (65) av	11636
L_90~270 (75) av	10022
L_90~270 (85) av	7512
L_45 (65) av	14101
L_45 (75) av	15369
L_45 (85) av	22232

Standard: GB/T 29293-2012

C Range: 0 - 360DEG
 C Interval: 45.0DEG
 Test Speed: HIGH
 Temperature:25.3DEG
 Operators:
 Test Date:2024-04-28

γ Range: 0 - 180DEG
 γ Interval: 1.0DEG
 Test System:EVERFINE GO-2000A_V1 SYSTEM V2.00.421
 Humidity:65.0%
 Test Distance:11.498m [K=1.0000]
 Remarks:

Planar Illuminance Curve



C Range: 0 - 360DEG
 C Interval: 45.0DEG
 Test Speed: HIGH
 Temperature: 25.3DEG
 Operators:
 Test Date: 2024-04-28

γ Range: 0 - 180DEG
 γ Interval: 1.0DEG
 Test System: EVERFINE GO-2000A_V1 SYSTEM V2.00.421
 Humidity: 65.0%
 Test Distance: 11.498m [K=1.0000]
 Remarks:

LUMINOUS DISTRIBUTION INTENSITY DATA

Test:U:240.28V I:0.1662A P:38.697W PF:0.9688 Freq:49.98Hz Lamp Flux:4891.63x1 lm		
NAME: S29690	TYPE:LED NCF	WEIGHT:
SPEC.:40W 4000K	DIM.: 1200x96x79mm	SERIAL No.:
MFR.:	SUR.:1200x96mm	Shielding Angle:

Table--1

UNIT: cd

C (DEG) \ γ (DEG)	0	45	90	135	180	225	270	315											
0	1644	1630	1622	1597	1644	1630	1622	1597											
5	1577	1594	1614	1566	1608	1598	1619	1571											
10	1514	1527	1585	1490	1516	1515	1591	1498											
15	1535	1475	1549	1435	1499	1440	1549	1439											
20	1567	1456	1488	1425	1548	1407	1492	1417											
25	1527	1457	1411	1435	1512	1408	1420	1423											
30	1458	1409	1321	1375	1449	1360	1327	1382											
35	1333	1331	1221	1288	1345	1279	1224	1315											
40	1195	1230	1107	1185	1211	1186	1112	1218											
45	1076	1093	986	1053	1088	1059	989	1083											
50	991	949	863	930	988	934	864	940											
55	901	821	736	810	890	817	738	810											
60	781	706	613	697	762	701	613	698											
65	656	606	492	590	645	591	491	597											
70	544	507	375	486	542	489	373	499											
75	429	406	260	392	433	394	259	399											
80	305	305	153	295	310	300	154	299											
85	174	202	65.1	188	173	198	65.9	187											
90	94.3	118	21.8	106	91.9	115	22.8	124											
95	58.4	70.6	17.6	65.0	58.4	69.5	19.1	75.1											
100	44.3	47.4	10.6	46.3	46.1	48.0	14.0	50.1											
105	37.5	35.2	7.68	36.2	38.9	36.8	7.94	37.3											
110	33.3	27.5	7.56	29.1	33.6	29.7	7.60	29.6											
115	29.6	22.0	7.49	23.6	29.6	24.3	7.32	23.9											
120	25.8	16.8	7.52	18.8	26.0	19.5	7.30	18.8											
125	21.9	12.7	7.85	14.7	22.3	15.4	7.43	14.0											
130	18.1	10.7	8.20	12.6	18.5	13.2	7.73	11.0											
135	14.9	9.98	8.62	11.7	15.0	12.0	8.20	10.0											
140	12.7	9.95	9.20	10.8	13.1	10.9	8.76	9.56											
145	11.9	10.2	9.73	10.7	12.3	10.5	9.28	9.59											
150	11.5	10.4	10.2	10.8	11.1	10.5	9.83	9.86											
155	11.5	10.7	10.7	11.0	11.1	10.6	10.3	10.2											
160	11.6	11.1	11.0	11.2	11.4	10.9	10.8	10.5											
165	11.7	11.4	11.3	11.5	11.7	11.2	11.2	10.9											
170	11.9	11.6	11.7	11.7	12.1	11.6	11.5	11.2											
175	12.1	11.9	11.8	11.8	12.4	11.8	11.8	11.5											
180	12.3	12.1	11.9	11.9	12.4	12.0	11.9	11.8											

C Range: 0 - 360DEG
 C Interval: 45.0DEG
 Test Speed: HIGH
 Temperature:25.3DEG
 Operators:
 Test Date:2024-04-28

γ Range: 0 - 180DEG
 γ Interval: 1.0DEG
 Test System:EVERFINE GO-2000A_V1 SYSTEM V2.00.421
 Humidity:65.0%
 Test Distance:11.498m [K=1.0000]
 Remarks: