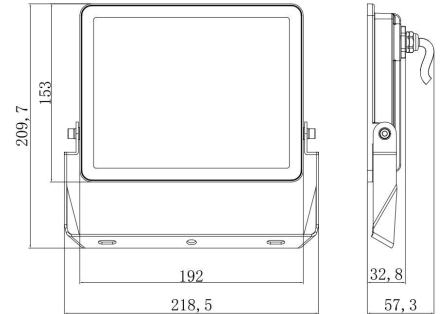


## Product Information



### Technical Specifications:

Model	Voltage	Power	Displacement factor	Lumen	Beam angle	CCT	Lifespan	Cable	Dimmable	Dimension(mm)
S10933	AC220-240V	50W	$\geq 0.9$	6000lm	110°	6500K	30,000hrs	100cm	No	218.5X209.7X57.3

### Driver Data Sheet

Driver date	Specification
Input rated Voltage	AC220-240V
Frequency	50/60HZ
Input Voltage	AC220-240V
Efficiency	80%
Total Load wattage	50W
Displacement Factor	$\geq 0.9$
Rated input current	0.220
Full load output current	0.2
Rated output current	0.16
Output current range	$\pm 10\%$
Power tolerance	$\pm 10\%$
Current output tolerance	$\pm 10\%$
Withstand voltage	1500V
Short circuit protection	PASS
Overload protection	PASS
No-load protection	PASS

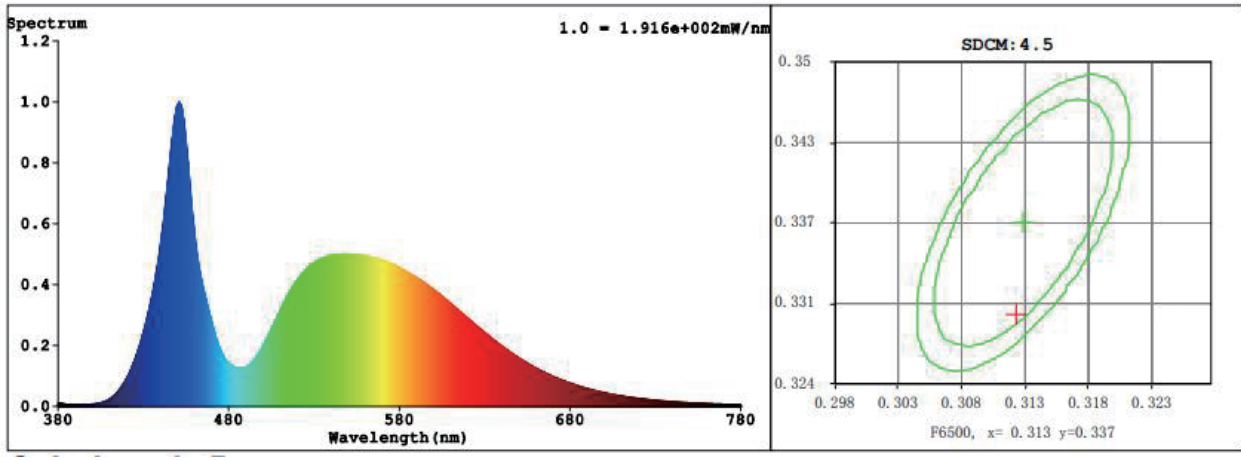
### Fixture Compatibility

Rated Wattage	Electrical Classification	Ingress Protection	Operating Temp	Operating Humidity	Storage
50W	I	IP65	-20°C - +40°C	10-95%	-25°C - +65°C $\leq$ 95%RH(25 best)

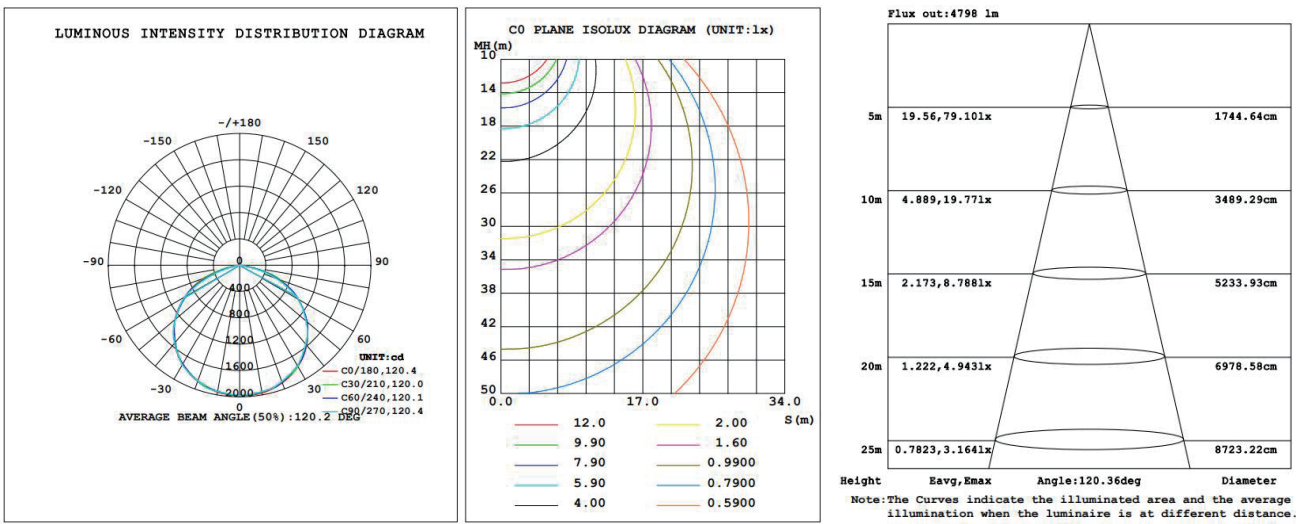


# Energizer®

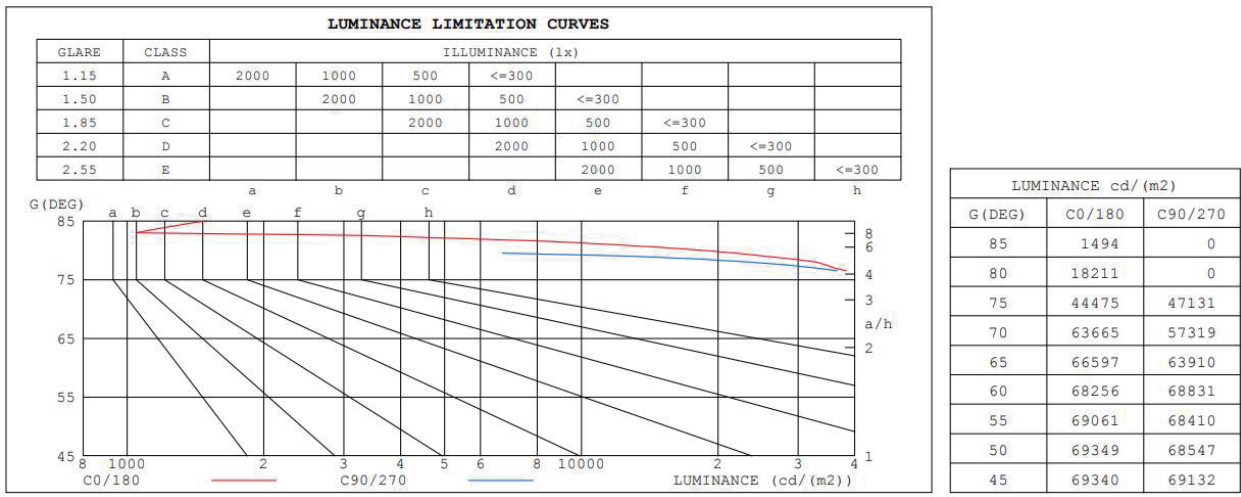
## Spectral Distribution



## Photometric Diagram

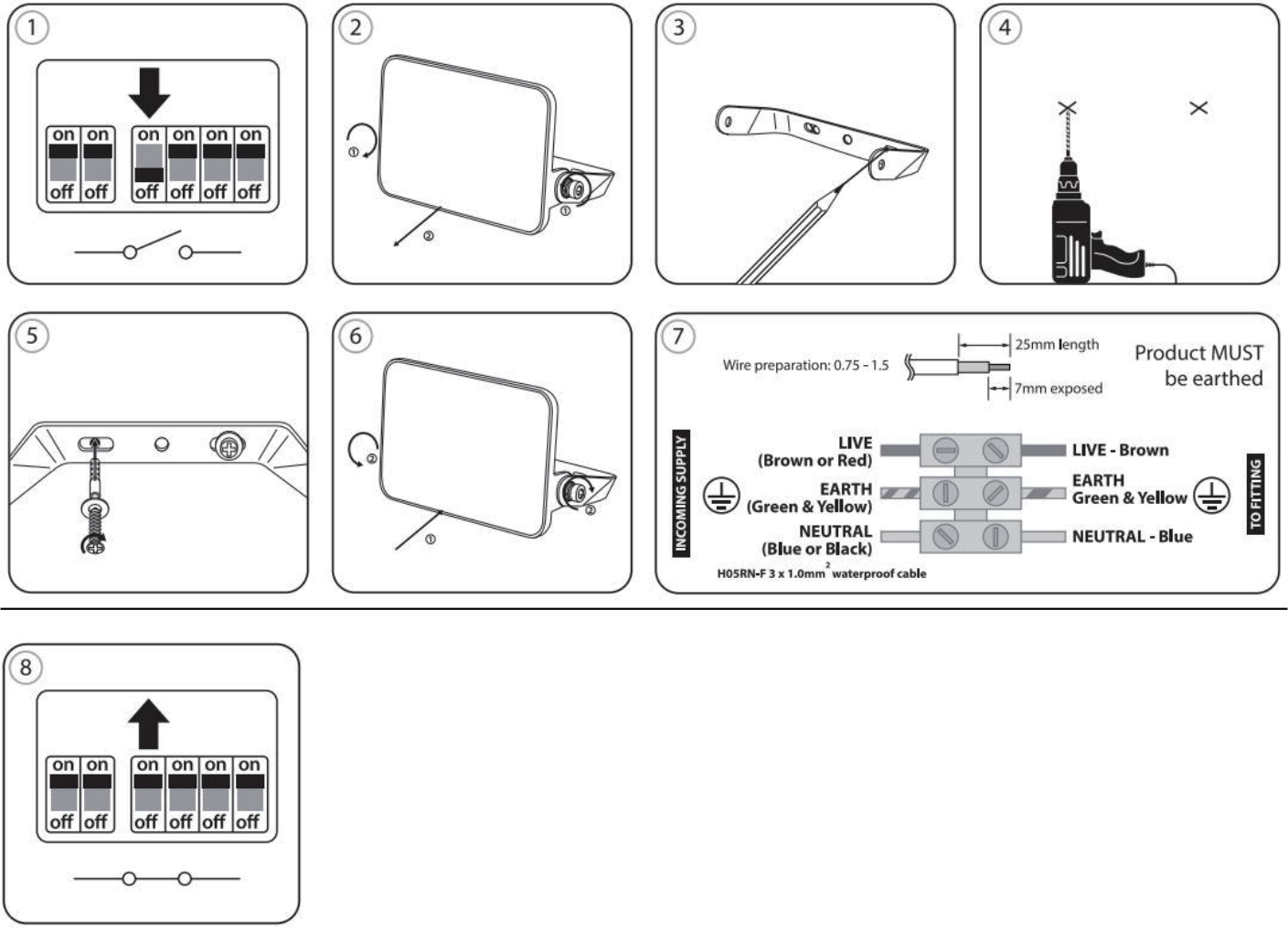


## Luminance Limitation Curves



## Installation

# Energizer®



## Packaging Information

	Size(CM)	N.W/Pcs (KGS)	G.W/Pcs (KGS)	Qty(PCS)
Carton	45.5X40.5*21	0.4	7.5	12

	CTNS	QTY(PCS)	VOLUME(CBM)
20" Standard container	723	8682	28
40" Standard container	1498	17985	58

## Packaging Information

EN IEC 60598-1:2021/A11:2022 EN 60598-2-5:2015 EN62493:2015/A1:2022  
 IEC60598-2-5:2015 used in conjunction with IEC60598-1:2020  
 EN IEC55015:2019/A11:2020 EN61547:2009 EN IEC 61000-3-2:2019/A1:2021 EN61000-3-3:2013/A2:2021  
 EN IEC 55015, EN61547, EN IEC 61000-3-2 and EN 61000-3-3